

Quality of the Soil, Timber, &c. on the Township Lines
East Boundary.

South Boundary.

Description of the Land, Timber, &c. on the Interior Sectional Lines.

| | |
|---------|---|
| Sec. 36 | Wet prairie - soil poor - No timber |
| " 25 | North of prairie rolling 2 ^d rate - Timber W. & B. Oak - no height. |
| " 24 | Rolling 4 th rate - timber same. |
| " 13 | Mostly wet prairie - soil poor - Timber Oak. |
| " 12 | Same |
| " 1 | Same |
| Sec. 36 | Mostly wet prairie, with some scattering Oak. Soil 2 ^d rate. |
| " 35 | Same |
| " 34 | Poor wet prairie. |
| " 33 | Rather marshy. Timber scattering Oak - soil poor. |
| " 32 | Marshy & poor timber Oak. |
| " 31 | Rolling 2 ^d rate - timber W. & B. Oak. |
| 35, 36 | In barrens & groves level & 3 ^d rate - timber W. & B. Oak, W. Oak. |
| 25, 36 | Poor marshy prairie fine red top grass & flag weed. |
| 25, 26 | In groves 2 ^d rate - timber W. & B. Oak. Wet prairie, 2 ^d rate marshy; soil poor. W. Oak. |
| 21, 25 | In barrens & groves open, level & 3 ^d rate. Timber as before. prairie poor, soil marshy &c. |
| 23, 24 | Same |
| 13, 24 | Same |
| 13, 14 | Same |
| 12, 13 | Same |
| 11, 12 | Same |
| 1, 12 | Same |
| 1, 2 | Same |
| 34, 35 | Same |
| 26, 35 | Same |
| 26, 27 | Same |
| 23, 26 | Same |
| 22, 23 | Same |
| 14, 23 | In barrens first 20 chains open & level. Last 60 chains heavily timbered & gently rolling. All 3 ^d rate. |
| 14, 15 | In barrens open, level & 3 ^d rate. Timber W. & B. Oak. prairie wet & 2 ^d rate. |
| 11, 14 | In barrens as before. |
| 10, 11 | Same |
| 2, 11 | Same |
| 2, 3 | Same |
| 33, 34 | Same |
| 27, 34 | Same |
| 27, 28 | Same |
| 22, 27 | Same |
| 21, 22 | Marsh - prairie poor; loamy soil; fine red top grass &c. &c. |
| 15, 22 | In barrens open, level & 3 ^d rate. Timber W. & B. Oak. prairie marshy &c. |
| 15, 16 | Same |
| 10, 15 | Same |
| 9, 10 | In barrens gently rolling, sandy soil. Timber W. & B. Oak. |
| 3, 10 | In barrens level. sandy soil. Timber as before. |
| 3, 4 | In barrens gently rolling 3 ^d rate - W. & B. Oak &c. |
| 32, 33 | In barrens open, level & 3 ^d rate - timber W. & B. Oak &c. |
| 28, 33 | In barrens gently rolling 3 ^d rate - timber W. & B. Oak &c. |
| 28, 29 | In groves level sandy soil. Timber W. Oak &c. |
| 21, 28 | In groves rolling 3 ^d rate - timber &c. same. |
| 20, 21 | In groves level 3 ^d rate - timber &c. same. |
| 16, 21 | Same |
| 16, 17 | In groves 2 ^d rate - timber W. & B. Oak, Hickory, Aspen - W. Oak &c. |
| 9, 16 | In barrens sandy soil - W. & B. Oak - W. Oak &c. |
| 8, 9 | In barrens & groves open & level. sandy soil. Timber W. & B. Oak. W. Oak &c. |
| 4, 9 | In barrens open & gently rolling. 3 ^d rate - timber W. & B. Oak. W. Oak &c. |
| 4, 5 | Same |
| 31, 32 | Same |
| 29, 32 | Same |
| 30, 31 | In barrens open & level sandy soil. Timber W. & B. Oak &c. |
| 29, 30 | Same |
| 20, 29 | Marsh - prairie loamy soil fine red top grass &c. |
| 19, 30 | In barrens gently rolling 3 ^d rate - W. & B. Oak &c. |
| 19, 20 | Same as 20, 29. |
| 17, 20 | In groves 2 ^d rate - timber W. & B. Oak - W. Oak &c. |
| 18, 19 | In barrens level sandy soil - timber &c. same. |
| 17, 18 | In groves open, level & 3 ^d rate - timber &c. same. |
| 8, 17 | Marshy prairie, poor soil. fine red top grass & Aspen. |
| 7, 18 | In barrens open, level, 3 ^d rate - timber &c. same. |
| 7, 8 | Marshy prairie - loamy soil - fine red top grass &c. |
| 5, 8 | In barrens open & level. sandy soil. Timber &c. same. |
| 6, 7 | Same |
| 5, 6 | Same |

| Posts. | Bearing Trees. | Inches diam's. | Courses they bear. | Links distant |
|--------|----------------|----------------|--------------------|---------------|
| 1 | | | | |
| 2 | | | | |
| 3 | | | | |
| 4 | | | | |
| 5 | | | | |
| 6 | | | | |
| 7 | | | | |
| 8 | | | | |
| 9 | | | | |
| 10 | | | | |
| 11 | | | | |
| 12 | | | | |
| 13 | | | | |
| 14 | | | | |
| 15 | | | | |
| 16 | | | | |
| 17 | | | | |
| 18 | | | | |
| 19 | | | | |
| 20 | | | | |
| 21 | | | | |
| 22 | | | | |
| 23 | | | | |
| 24 | | | | |
| 25 | | | | |
| 26 | | | | |
| 27 | | | | |
| 28 | | | | |
| 29 | | | | |
| 30 | | | | |
| 31 | | | | |
| 32 | | | | |
| 33 | | | | |
| 34 | | | | |
| 35 | | | | |
| 36 | | | | |
| 37 | | | | |

The figures in this column refer to the Posts numbered in red ink on the Plans.

Exterior Section and Quarter Section Corners Described.

Interior Quarter Section Corners Described.

| Posts. | Bearing Trees. | Inches diam'r. | Courses they bear. | Links distant. |
|--------|-----------------|----------------|--------------------|----------------|
| A | Y. Oak | 6 | N 11 E | 45 |
| | Y. Oak | 18 | S 86 E | 412 |
| a | | | | |
| B | W. Oak | 12 | S 1 W | 1050 |
| | W. Oak | 18 | S 2 E | 1112 |
| b | | | | |
| C | Post in mound | | | |
| c | | | | |
| D | B. Oak | 20 | S 49 W | 113 |
| | W. Oak | 12 | S 57 W | 81 |
| d | | | | |
| E | B. Oak | 20 | S 47 E | 31 |
| | B. Oak | 12 | S 47 W | 32 |
| e | | | | |
| F | Post in a mound | | | |
| f | | | | |
| G | W. Oak | 18 | S 1 E | 1556 |
| | No other | | | |
| g | Y. Oak | 8 | S 20 W | 53 |
| | W. Oak | 12 | N 78 W | 48 |
| | W. Oak | 18 | N 3 W | 223 |
| | W. Oak | 16 | N 11 E | 162 |
| | W. Oak | 18 | S 86 W | 514 |
| | W. Oak | 20 | S 76 W | 507 |
| | W. Oak | 14 | N 9 W | 1690 |
| | No other | | | |
| i | W. Oak | 18 | N 72 W | 388 |
| | W. Oak | 16 | N 81 W | 424 |
| K | Y. Oak | 18 | N 69 W | 55 |
| | W. Oak | 2 | S 23 W | 87 |
| k | Y. Oak | 18 | N 87 W | 216 |
| | Y. Oak | 7 | S 87 W | 218 |
| L | Y. Oak | 12 | S 33 W | 86 |
| | W. Oak | 10 | N 18 W | 50 |
| | Y. Oak | 10 | S 4 W | 1170 |
| | No other | | | |
| M | Post in a mound | | | |
| m | Aspen | 6 | N 10 W | 1428 |
| | No other | | | |
| N | W. Oak | 10 | S 46 E | 181 |
| | W. Oak | 12 | S 52 W | 136 |
| n | W. Oak | 10 | S 15 W | 392 |
| | No other | | | |
| O | Y. Oak | 14 | N 18 W | 32 |
| | W. Oak | 12 | N 53 E | 30 |
| | Y. Oak | 8 | N 70 E | 265 |
| | No other | | | |
| P | W. Oak | 18 | N 66 E | 1215 |
| | W. Oak | 16 | N 65 E | 1203 |
| p | Aspen | 3 | S 68 E | 888 |
| | No other | | | |
| Q | W. Oak | 20 | N 87 W | 461 |
| | Y. Oak | 20 | N 18 E | 46 |
| | W. Oak | 8 | N 89 E | 1221 |
| | No other | | | |
| R | Y. Oak | 10 | N 29 W | 167 |
| | Y. Oak | 8 | N 80 E | 139 |
| | Y. Oak | 9 | S 85 E | 1361 |
| | No other | | | |
| S | W. Oak | 18 | N 10 E | 102 |
| | W. Oak | 20 | N 39 W | 112 |
| | Y. Oak | 7 | N 21 E | 277 |
| | Y. Oak | 6 | S 50 W | 96 |
| T | W. Oak | 12 | N 56 E | 36 |
| | W. Oak | 12 | S 24 E | 68 |
| t | Y. Oak | 18 | N 65 W | 53 |
| | W. Oak | 6 | N 44 W | 16 |
| U | B. Oak | 12 | S 77 E | 229 |
| | B. Oak | 8 | N 8 E | 200 |

Interior Section Corners Described.

| Corners of Sections. | Bearing Trees. | Inches diam'r. | Courses they bear. | Links distant. |
|----------------------|--------------------------|----------------|--------------------|----------------|
| 25, 26, 35, 36, | Post in mound | | | |
| 23, 24, 25, 26, | W. Oak | 24 | S. 53 W | 280 |
| | B. Oak | 12 | N. 24 E | |
| 13, 14, 23, 24, | W. Oak | 6 | N. 49 E | 56 |
| | W. Oak | 8 | S. 9 W | 123 |
| 11, 12, 13, 14, | Post - no bearings given | | | |
| 1, 2, 11, 12, | Post in mound | | | |
| 26, 27, 34, 35, | B. Oak | 12 | S. 23 E | 75 |
| | W. Oak | 12 | N. 77 E | 213 |
| 22, 23, 26, 27, | W. Oak | 18 | N. 1 E | 142 |
| | W. Oak | 15 | N. 52 W | 338 |
| 14, 15, 22, 23, | W. Oak | 20 | N. 78 E | 46 |
| | W. Oak | 6 | N. 35 W | 20 |
| 10, 11, 14, 15, | Post in mound | | | |
| 2, 3, 10, 11, | W. Oak | 20 | S. 48 W | 110 |
| | B. Oak | 18 | S. 65 E | 194 |
| 27, 28, 33, 34, | Aspen | 12 | S. 8 W | 75 |
| | Aspen | 10 | N. 20 E | 30 |
| 21, 22, 27, 28, | Post in mound | | | |
| 15, 16, 21, 22, | Post in mound | | | |
| 9, 10, 15, 16, | B. Oak | 20 | N. 33 W | 33 |
| | W. Oak | 12 | N. 45 E | 60 |
| 3, 4, 9, 10, | W. Oak | 20 | S. 26 E | 55 |
| | B. Oak | 8 | E. 33 W | 60 |
| 28, 29, 32, 33, | W. Oak | 30 | N 15 W | 41 |
| | W. Oak | 18 | N 29 W | 74 |
| 20, 21, 28, 29, | Elm | 10 | N 32 W | 303 |
| | W. Oak | 30 | N 25 W | 400 |
| 16, 17, 20, 21, | W. Oak | 20 | S 40 E | 23 |
| | W. Oak | 12 | N 1 W | 9 |
| 8, 9, 16, 17, | Post in a mound | | | |
| 4, 5, 8, 9, | B. Oak | 15 | S. 5 E | 20 |
| | B. Oak | 10 | West | 24 |
| 29, 30, 31, 32, | B. Oak | 12 | S. 72 E | 93 |
| | B. Oak | 10 | N. 30 W | 127 |
| 19, 20, 29, 30, | W. Oak | 18 | S. 4 E | 323 |
| | W. Oak | 20 | S. 15 W | 310 |
| 17, 18, 19, 20, | Post in mound | | | |
| 7, 8, 17, 18, | W. Oak | 10 | S. 1 W | 710 |
| | W. Oak | 12 | S. 2 E | 725 |
| 5, 6, 7, 8, | Post in mound | | | |

| Qr. Sec. Posts on the Lines. | Bearing Trees. | Inches diam'r. | Courses they bear. | Links distant. |
|------------------------------|---------------------|----------------|--------------------|----------------|
| M to U at 1 | Post in mound | | | |
| 2 | Post in mound | | | |
| 3 | Post in mound | | | |
| 4 | W. Oak | 10 | N 44 E | 66 |
| | B. Oak | 12 | N 36 W | 54 |
| 5 | B. Oak | 20 | S. 11 E | 138 |
| | W. Oak | 24 | S. 22 W | 111 |
| 6 | W. Oak | 12 | S. 59 W | 89 |
| | W. Oak | 14 | S. 33 W | 99 |
| L to P at 1 | Post in mound | | | |
| 2 | B. Oak | 18 | S. 59 W | 250 |
| | W. Oak | 12 | S. 27 W | 220 |
| 3 | Post in mound | | | |
| 4 | Post in a sod mound | | | |
| 5 | Post in mound | | | |
| 6 | B. Oak | 12 | S. 56 W | 17 |
| | B. Oak | 24 | N. 41 W | 58 |
| K to W at 1 | Post in mound | | | |
| 2 | W. Oak | 18 | N. 5 E | 69 |
| | W. Oak | 20 | N. 5 W | 70 |
| 3 | W. Oak | 20 | S. 25 E | 6 |
| | B. Oak | 10 | N. 25 W | 31 |
| 4 | W. Oak | 12 | N 45 W | 130 |
| | W. Oak | 18 | N 72 W | 130 |
| 5 | Post in mound | | | |
| 6 | B. Oak | 18 | S. 50 W | 213 |
| | no other tree near | | | |
| I to X at 1 | W. Oak | 12 | S. 36 W | 21 |
| | W. Oak | 20 | N. 77 W | 56 |
| 2 | B. Oak | 20 | S. 37 E | 138 |
| | W. Oak | 8 | N. 80 E | 143 |
| 3 | W. Oak | 12 | S. 30 W | 162 |
| | W. Oak | 10 | S. 45 W | 198 |
| 4 | Post in mound | | | |
| 5 | Post in mound | | | |
| 6 | Post in mound | | | |
| H to Y at 1 | W. Oak | 12 | N. 78 E | 98 |
| | W. Oak | 12 | N. 76 W | 77 |
| 2 | W. Oak | 12 | S. 78 E | 76 |
| | B. Oak | 20 | N. 33 E | 78 |
| 3 | Post in a sod mound | | | |
| 4 | Post in a sod mound | | | |
| 5 | Post in a sod mound | | | |
| 6 | Post in a sod mound | | | |
| O to F at 1 | W. Oak | 20 | S. 30 E | 985 |
| | W. Oak | 18 | S. 34 E | 766 |
| 2 | Post in mound | | | |
| 3 | W. Oak | 30 | S. 67 E | 68 |
| | B. Oak | 12 | S. 39 W | 4 |
| 4 | Post in mound | | | |
| 5 | W. Oak | 14 | S. 28 E | 36 |
| | W. Oak | 12 | N. 20 E | 18 |
| 6 | W. Oak | 12 | S. 32 W | 38 |
| | W. Oak | 10 | N. 30 E | 9 |

S to B at 1

W. Oak

18

S. 7 W

184

W. Oak

8

N. 32 W

106

W. Oak

12

N. 37 E

85

W. Oak

6

S. 84 E

16

3 Post in mound

4 W. Oak

10

N. 86 E

241

W. Oak

12

S. 92 E

238

5 Post in mound

6 B. Oak

8

N. 51 E

81

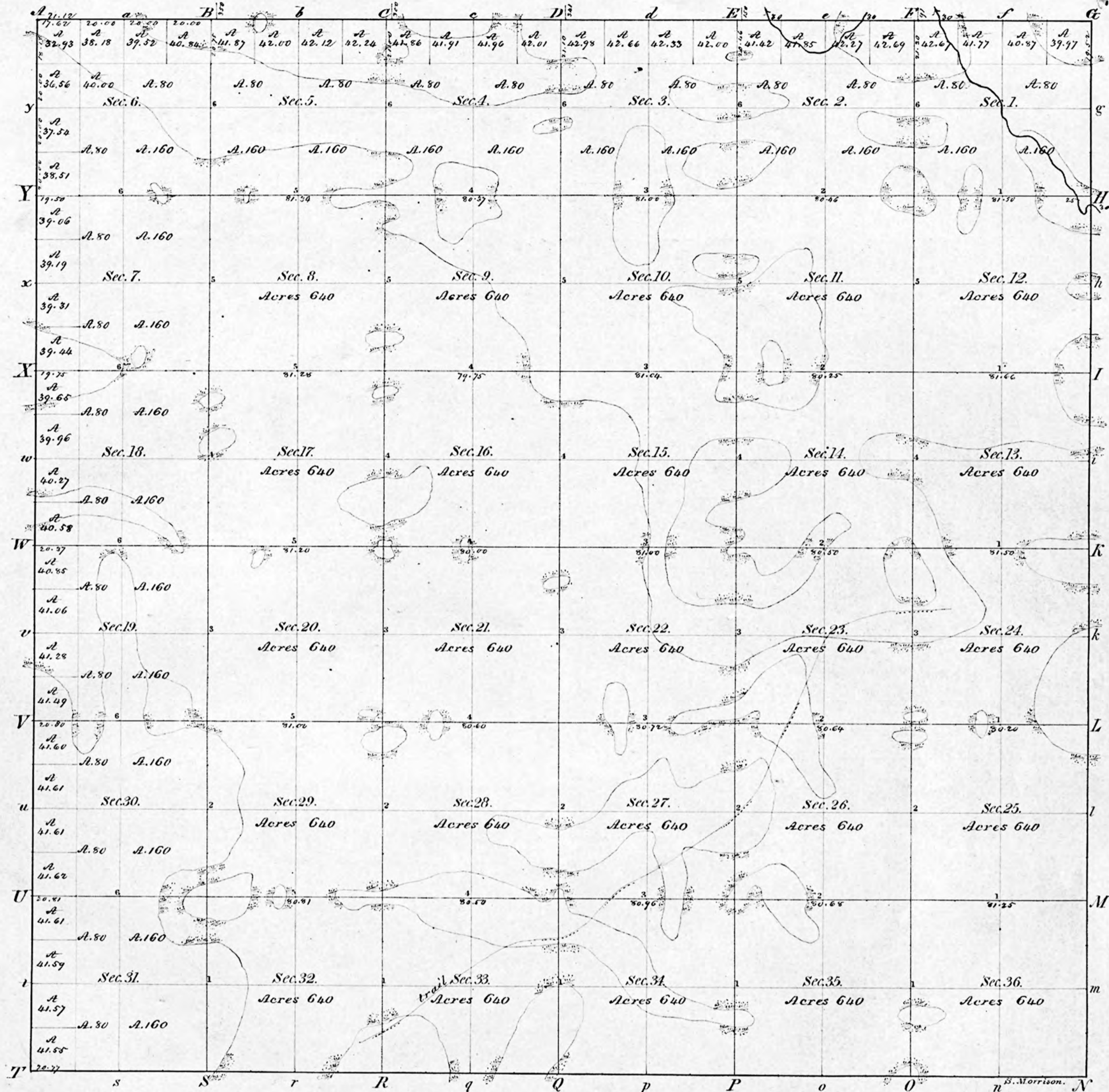
W. Oak

18

N. 71 W

260

Township N^o 31 N. Range N^o 3 W. 2nd Mer.



Surveyed in 1834 by Abner E. Van Ness, Deputy Surveyor.

Scale, 40 chains to an Inch.

I certify that the above is a true copy of the Original plot in this Office.
 Surveyor General's Office, Lucius Lyon,
 Detroit Nov. 1, 1849. Sur. Gen!