

Quality of the Soil, Timber, &c. on the Township Lines.

East Boundary.		Description of the Land, Timber, &c. on the Interior Sectional Lines.	South Boundary.	
Sec.	36		Sec.	36
36	Land very level, prairie mostly dry and good soil	35, 36	Land 2 <sup>nd</sup> rate timber scarce and scattered, W. B. Bar. Oak &c.	
25	Land barren, good soil, well timbered	25, 36	Land 2 <sup>nd</sup> rate timber Poplar, Cherry, B. Oak, Mulberry, Hickory, Sycamore, Undergrowth &c.	
24	Land rolling barren thin soil, thinly timbered W. B. Oak, Hickory &c.	25, 26	Land level wet barrens, some flag and lullrush swamps, a few W. B. Oak	
13	Land south of river similar, south of river some lullrush barrens with Poplar	24, 25	Land level, part flag and lullrush swamps, no timber	
12	Land upland rolling poor soil, some low places, W. B. Oak &c.	23, 24	Land 2 <sup>nd</sup> rate, some flag and lullrush swamps, no timber	
1	Land &c. similar	13, 24	Land mostly dry barrens, part flag swamp, scattered W. B. Oak, Hickory &c.	
		13, 14	Land level generally, 2 <sup>nd</sup> rate W. B. Oak & Hickory, Undergrowth, Brush &c.	
		12, 13	Land 3 <sup>rd</sup> rate B. & W. Oak &c.	
		11, 12	Land 3 <sup>rd</sup> rate, B. & W. Oak, Hickory &c.	
		1, 12	Land level wet barrens, flag and lullrush swamps, scarce of timber	
		1, 2	Land level wet barrens, almost destitute of timber	
		34, 35	Land 3 <sup>rd</sup> rate, part wet and part dry, barrens, B. & W. Oak, Hickory &c.	
		26, 35	Land 3 <sup>rd</sup> rate, part timbered with B. Oak, B. & W. Oak, Hickory &c.	
		26, 27	Land level, mostly wet flag and lullrush swamp, a few B. & W. Oak &c.	
		23, 26	Land level 3 <sup>rd</sup> rate, a few scattering trees B. & W. Oak &c. some flag swamp	
		22, 23	Land level, scarce of timber, flag and lullrush swamp, a few trees B. & W. Oak	
		14, 23	Land 3 <sup>rd</sup> rate, part wet and part dry, barrens, a few trees B. & W. Oak &c.	
		14, 15	Land part dry and part wet barrens, timber B. & W. Oak, Hickory &c.	
		11, 14	Land dry barrens, timber B. & W. Oak, Hickory &c.	
		10, 11	Land level wet barrens, timber B. & W. Oak, Hickory &c.	
		2, 11	Land level west half dry, East half principally flag and lullrush swamp, timber B. & W. Oak &c.	
		2, 3	Land level wet barrens, B. & W. Oak	
		33, 34	Land mostly wet barrens, lullrush and flag swamp, a few B. & W. Oak	
		27, 34	Land almost entirely wet and moist flag and lullrush swamps	
		27, 28	Land generally, well barrens, timber B. & W. Oak	
		22, 27	Same	
		21, 22	Land level dry barrens, timber B. & W. Oak	
		15, 22	Land level wet barrens, scarce of timber some B. & W. Oak	
		15, 16	Land generally, wet barrens, timber B. & W. Oak &c.	
		10, 15	Land generally, barrens, 3 <sup>rd</sup> rate, timber B. & W. Oak &c.	
		9, 10	Land level, South half dry, North half wet barrens, timber B. & W. Oak &c.	
		3, 10	Land level wet barrens, some swamp, timber B. & W. Oak	
		3, 4	Land level and runs through swamps, most deep, little or no timber, a few B. & W. Oak	
		32, 33	Land generally, dry barrens, B. & W. Oak	
		28, 33	Land generally, wet barrens, and scarce of timber	
		23, 29	Land generally, wet barrens, timber B. & W. Oak, Undergrowth &c.	
		21, 28	Land level, part dry barrens, timber B. & W. Oak &c.	
		20, 21	Land generally, wet barrens, timber B. & W. Oak &c.	
		16, 21	Land level wet barrens, timber B. & W. Oak &c.	
		16, 17	Land wet barrens, mostly water and destitute of timber, almost	
		9, 16	Land principally, wet barrens with but little timber, a few B. & W. Oak &c.	
		8, 9	Land level, mostly barrens, but no timber	
		4, 9	Land level almost totally covered with water and destitute of timber	
		4, 5	Land level, marshy barrens, timber scarce some grass of B. & W. Oak &c.	
		31, 32	Land level wet barrens, scarce of timber, grass of W. B. Oak &c.	
		29, 32	Land level wet barrens, timber scarce some B. & W. Oak &c.	
		30, 31	Land wet barrens, scarce of timber, a few B. & W. Oak	
		29, 30	Land level wet barrens, scarce of timber, some B. & W. Oak	
		20, 29	Land generally, dry barrens, some W. B. Oak	
		19, 30	Land level wet barrens, timber W. B. Oak &c.	
		19, 20	Land level wet barrens, timber W. B. Oak &c.	
		17, 20	Land level wet barrens, timber W. B. Oak &c.	
		18, 19	The whole of this line runs through a marshy barrens timber W. B. Oak & Aspen	
		17, 18	Land level wet barrens, some grass, timber W. B. Oak &c.	
		8, 17	Land level wet barrens, some grass, Aspen & W. Oak &c.	
		7, 18	Land level wet barrens, timber some grass B. & W. Oak &c.	
		7, 8	Land level wet prairie, some grass, Lynn, Elm, W. Oak &c.	
		5, 8	Land level wet prairie, some grass of W. Oak, Aspen &c.	
		6, 7	Land level wet barrens, timber B. & W. Oak	
		5, 6	Land level wet barrens, timber B. & W. Oak	

Corners on  
Shippagan River

Posts.	Bearing Trees.	Inches diam'r.	Courses they bear.	Links distant
1	W. Oak	16	S. 32° W.	1.55
	W. Oak	17	N. 61° E.	1.31
2	W. Oak	16	S. 37° E.	3.50
	W. Oak	15	S. 19° W.	3.16
3	W. Oak	9	N. 45° E.	2.00
	Sycamore	15	S. 33° W.	.53
4	Lynn	12	S. 75° W.	1.18
	Hickory	6	S. 34° E.	.15
5	Elm	8	S. 57° E.	1.92
	Sycamore	30	N. 64° W.	1.51
6	Sycamore	15	N. 7° W.	.47
	W. Oak	30	S. 15° W.	.69
7	W. Oak	12	N. 21° E.	.24
	B. Oak	30	S. 31° E.	.42
8	Maple	10	N. 63° W.	.13
	W. Oak	15	S. 62° E.	.30
9	Maple	20	S. 15° E.	.15
	W. Oak	6	N. 56° E.	.25
10	B. Oak	8	S. 35° E.	.22
	W. Oak	6	N. 75° W.	1.00
11	Sycamore	14	Corners	
12	B. Oak	17	S. 52° E.	.81
	W. Oak	16	S. 71° W.	.68
13	W. Oak	30	N. 75° W.	2.32
	W. Oak	36	N. 9° E.	4.05
14	W. Oak	16	Corners	
15	Sycamore	30	S. 27° E.	2.30
	W. Oak	30	N. 45° W.	.34
16	W. Oak	12	S. 40° W.	.66
	W. Oak	16	N. 61° E.	.27
17	Hickory	30	N. 55° E.	.21
	W. Oak	20	S. 34° W.	.28
18	Hickory	30	N. 17° W.	.91
	Sycamore	30	S. 55° W.	.22
19	Maple	15	S. 64° E.	.30
	Lynn	4	N. 57° W.	.35
20	W. Oak	30	S. 70° E.	.85
	B. Oak	35	S. 75° W.	.95
21	W. Oak	12	S. 55° E.	.35
	B. Oak	20	S. 75° E.	.25
22	Hickory	25	N. 14° E.	.50
	B. Oak	20	S. 55° W.	.61
23	B. Oak	8	Corners	
24	Sycamore	6	S. 50° E.	.20
	W. Oak	12	S. 80° W.	.60
25				
26				
27				
28				
29				
30				
31				
32				
33				
34				
35				
36				
37				

The figures in this column refer to the Posts numbered in red ink on the Plans.

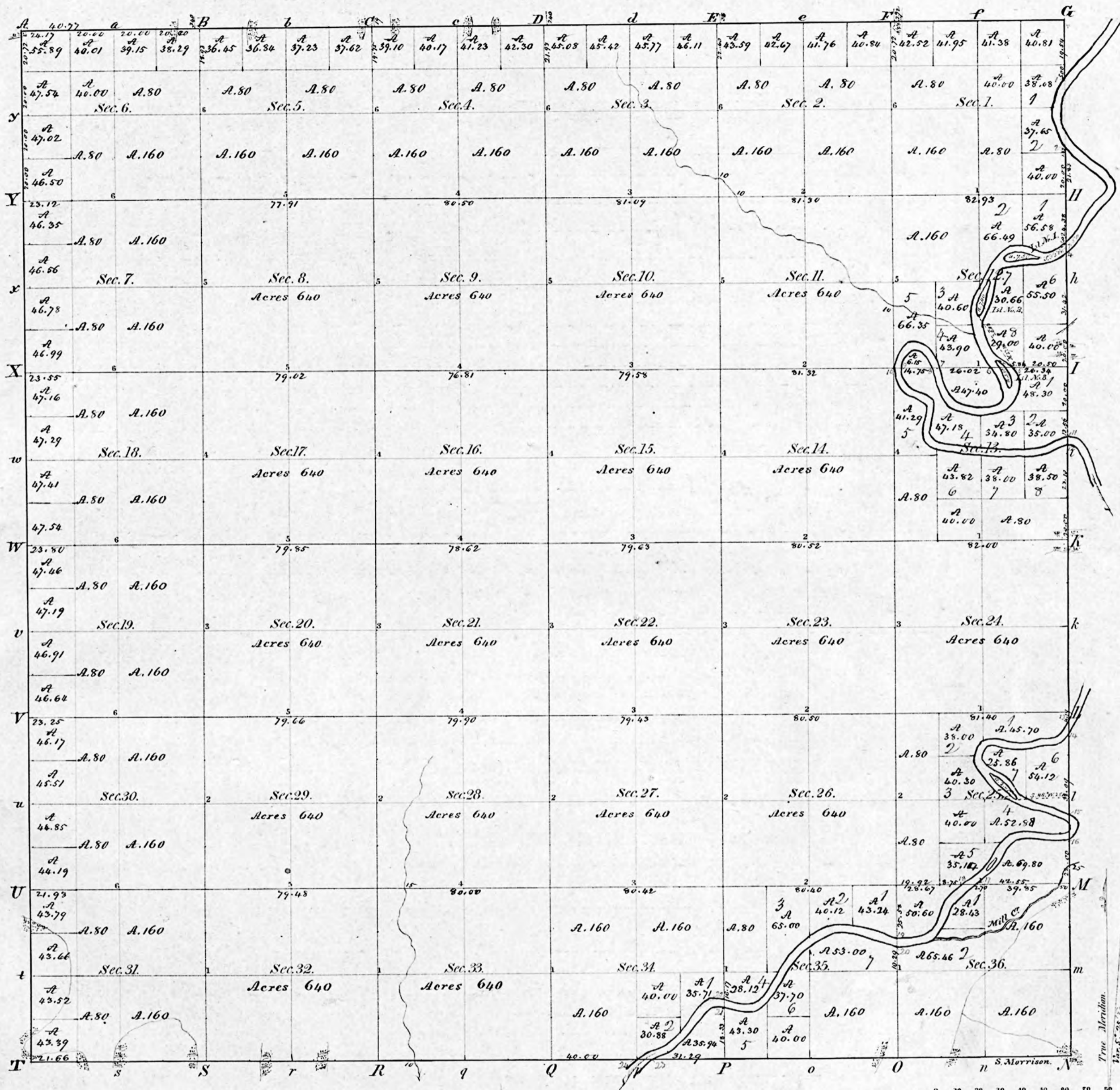
Township No. 30 North, Range No. 2 West 2nd Meridian, Indiana

Exterior Section and Quarter Section Corners Described.

Interior Quarter Section Corners Described.

Exterior Section and Quarter Section Corners Described.					Interior Quarter Section Corners Described.				
Posts.	Bearing Trees.	Inches diam'r.	Courses they bear.	Links distant.	Posts.	Bearing Trees.	Inches diam'r.	Courses they bear.	Links distant.
A	W. Oak	10	S. 46 E.	151	u	W. Oak	10	S. 75 W.	57
a	Ditto	12	S. 52 W.	136	v	W. Oak	9	S. 5 W.	57
B	B. Oak	12	S. 14 W.	35	w	W. Oak	9	S. 41 W.	206
b	Ditto	12	S. 44 E.	111	y	W. Oak	6	S. 30 W.	239
C	B. Oak	8	S. 17 E.	52	z	W. Oak	10	S. 37 W.	153
c	Ditto	10	S. 42 E.	111	aa	W. Oak	10	S. 62 W.	178
D	Pat in Swamp, mentioned				x	W. Oak	10	S. 69 W.	56
d					y	W. Oak	10	S. 11 W.	13
E	B. Oak	18	S. 42 W.	292	z	W. Oak	11	S. 48 W.	19
e	W. Oak	12	S. 21 E.	350	aa	W. Oak	12	S. 18 E.	174
F	B. Oak	20	S. 38 E.	300	bb	W. Oak	12	S. 61 W.	162
f	Ditto	20	S. 10 E.	271	Interior Section Corners Described.				
g	W. Oak	11	S. 12 W.	39	Corners of Sections.				
g	Ditto	9	S. 21 W.	53	25, 26, 35, 36,	W. Oak	30	S. 42 W.	239
h	W. Oak	21	S. 26 W.	33		Ditto	30	S. 19 E.	292
h	B. Oak	10	S. 36 W.	64	23, 24, 25, 26,	Pat in Swamp			
i	B. Oak	24	S. 35 W.	46	13, 14, 23, 24,	W. Oak	20	S. 12 W.	22
i	B. Gum	11	S. 70 W.	10		Ditto	20	S. 1 E.	24
j	B. Oak	8	S. 30 W.	13	11, 12, 13, 14,	B. Oak	8	S. 35 E.	22
j	W. Oak	8	S. 73 W.	45		Ditto	6	S. 75 W.	100
k	W. Oak	11	S. 75 W.	114	1, 2, 11, 12,	B. Oak	20	S. 54 W.	40
k	Ditto	10	S. 39 W.	162		W. Oak	18	S. 15 E.	30
l	Hickory	11	S. 32 W.	245	26, 27, 34, 35,	B. Oak	8	S. 56 E.	257
l	B. Oak	15	S. 73 W.	192		Ditto	11	S. 48 W.	230
m	W. Oak	20	S. 47 W.	333	22, 23, 26, 27,	B. Oak	30	S. 16 E.	416
m	Ditto	16	S. 24 W.	710		Ditto	20	S. 47 E.	448
n	W. Oak	12	S. 36 W.	47	14, 15, 22, 23,	W. Oak	-	S. 39 W.	353
n	Ditto	19	S. 4 W.	370		Ditto	-	S. 64 E.	685
o	W. Oak	36	S. 40 W.	141	10, 11, 14, 15,	W. Oak	24	S. 16 E.	43
o	Ditto	14	S. 76 W.	241		Ditto	12	S. 41 W.	23
p	W. Oak	21	S. 38 W.	77	2, 3, 10, 11,	W. Oak	18	S. 45 W.	43
p	Ditto	16	S. 12 W.	30		B. Oak	20	S. 61 E.	39
q	W. Oak	12	S. 41 W.	51	27, 28, 33, 34,	W. Oak	25	S. 67 E.	371
q	W. Oak	19	S. 59 W.	71		W. Oak	18	S. 70 E.	261
r	Pat in Swamp				21, 22, 27, 28,	B. Oak	6	S. 74 E.	333
r						Ditto	6	S. 13 E.	341
s	W. Oak	18	S. 15 E.	977	15, 16, 21, 22,	W. Oak	24	S. 77 W.	39
s	No other					Ditto	30	S. 64 E.	50
t	Pat in Swamp				9, 10, 15, 16,	Pat in Swamp			
t					3, 4, 9, 10,	W. Oak	18	S. 75 W.	162
u	W. Oak	13	S. 56 E.	45		Ditto	12	S. 38 W.	161
u	W. Oak	8	S. 62 W.	66	28, 29, 32, 33,	W. Oak	20	S. 51 W.	411
v	B. Oak	18	S. 21 W.	274		Ditto	18	S. 41 E.	132
v	Ditto	17	S. 4 E.	327	20, 21, 28, 29,	B. Oak	20	S. 4 E.	452
w	W. Oak	11	S. 23 W.	249		W. Oak	20	S. 10 E.	516
w	Ditto	26	S. 55 W.	271	16, 17, 20, 21,	B. Oak	24	S. 11 W.	714
x	Sycamore	6	S. 50 E.	20		W. Oak	18	S. 55 W.	650
x	W. Oak	10	S. 80 W.	66	8, 9, 16, 17,	W. Oak	10	S. 46 W.	275
y	W. Oak	12	S. 67 E.	43		Ditto	24	S. 71 W.	289
y	Ditto	10	S. 10 W.	54	4, 5, 8, 9,	B. Oak	30	S. 18 W.	800
z	W. Oak	10	S. 83 E.	103		Ditto	18	S. 5 E.	811
z	B. Oak	10	S. 77 W.	256	29, 30, 31, 32,	B. Oak	10	S. 37 E.	245
aa	W. Oak	11	S. 40 E.	121		W. Oak	24	S. 41 E.	186
aa	Ditto	12	S. 76 W.	71	19, 20, 29, 30,	B. Oak	8	S. 74 E.	79
ab	W. Oak	20	S. 59 W.	152		Gum	9	S. 9 E.	116
ab	No other				17, 18, 19, 20,	W. Oak	18	S. 79 E.	137
ac	W. Oak	10	S. 30 E.	50		Ditto	15	S. 21 E.	136
ac	Ditto	10	S. 14 W.	34	7, 8, 17, 18,	B. Oak	12	S. 12 W.	750
ad	W. Oak	30	S. 59 W.	143		W. Oak	20	S. 4 W.	730
ad	Ditto	20	S. 73 W.	172	5, 6, 7, 8,	Pat in Swamp			
ae	W. Oak	21	S. 24 W.	460					
ae	W. Oak	12	S. 6 E.	704					
af	W. Oak	20	S. 41 W.	333					
af	W. Oak	12	S. 39 W.	221					
ag	W. Oak	12	S. 70 W.	40					
ag	Ditto	12	S. 79 W.	45					

Township N<sup>o</sup> 30 N. Range N<sup>o</sup> 2 W. 2<sup>d</sup> Mer.



Surveyed in 1834 by Robert Hanna, Deputy Surveyor.

I certify that the above is a true copy of the Original plot in this Office.

Surveyor General's Office, Lucius Lyon,  
 Detroit Nov. 1. 1849. Sur. Gen!