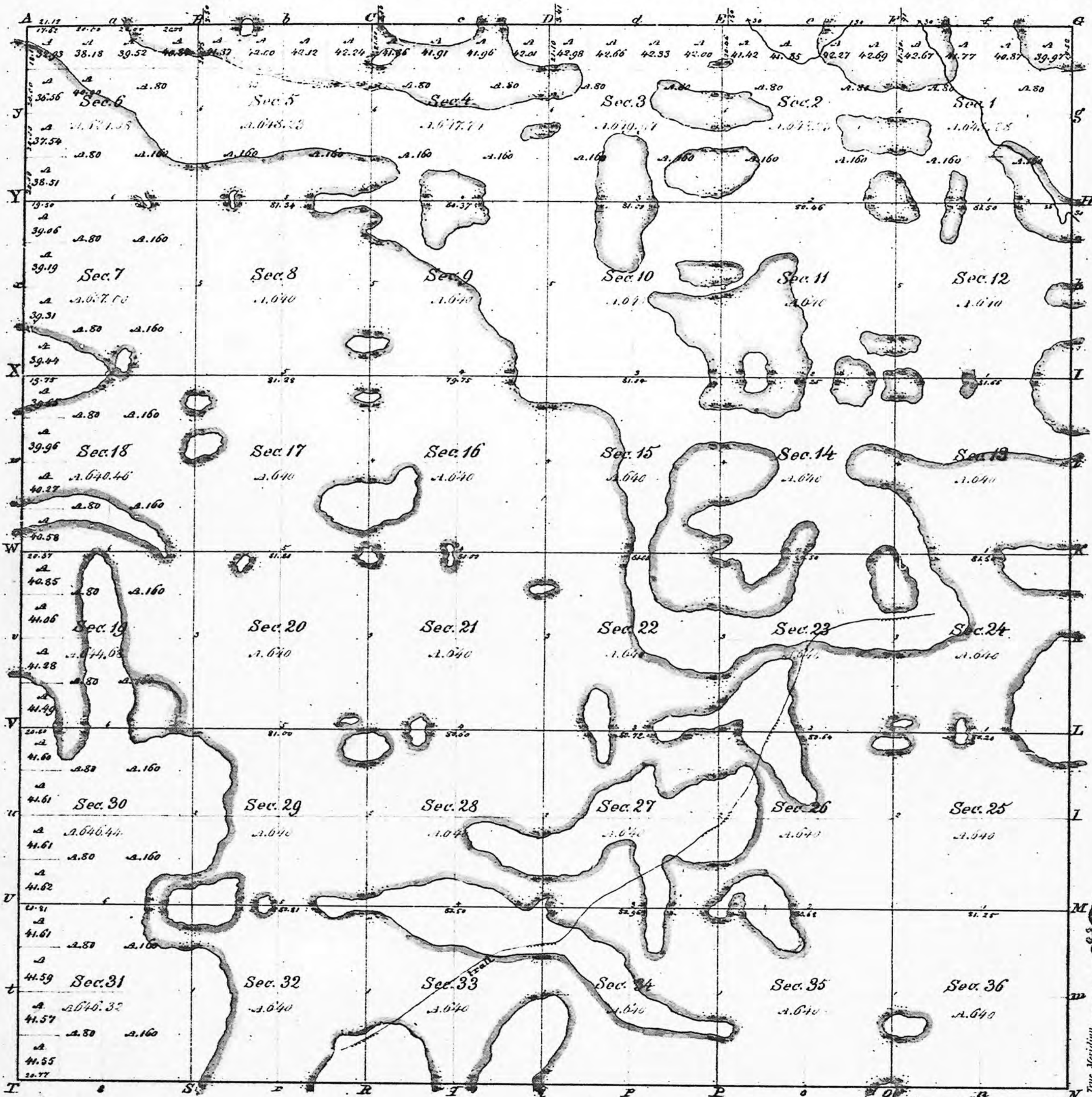


INDIANA.
Township N^o XXXI N, Range N^o III W, 2^d Mer: N & W 2 P. M.



Total number of Acres 22,018.43

Surveys Designated	By Whom Surveyed	Date of Contract	Amount of Surveys	When Surveyed	When p ^d for and ch ^d in the Sur ^r Gen ^l acc ^t ?
Subdivision.	A. S. Harnett	24 th Feb. 1834	36 Ch ^s 82 ^{lks}	3 ^d of 1834	4 th of 1834
Township lines.	Sibley & Clarke	29 June 1833	23 77 59	1 st of "	2 ^d of "

The above Map of Township N^o 31 North, of Range N^o 3 W, of the 2^d Principal Meridian (Indiana) is strictly conformable to the field notes of the survey thereof on file in this Office, which have been examined and approved.

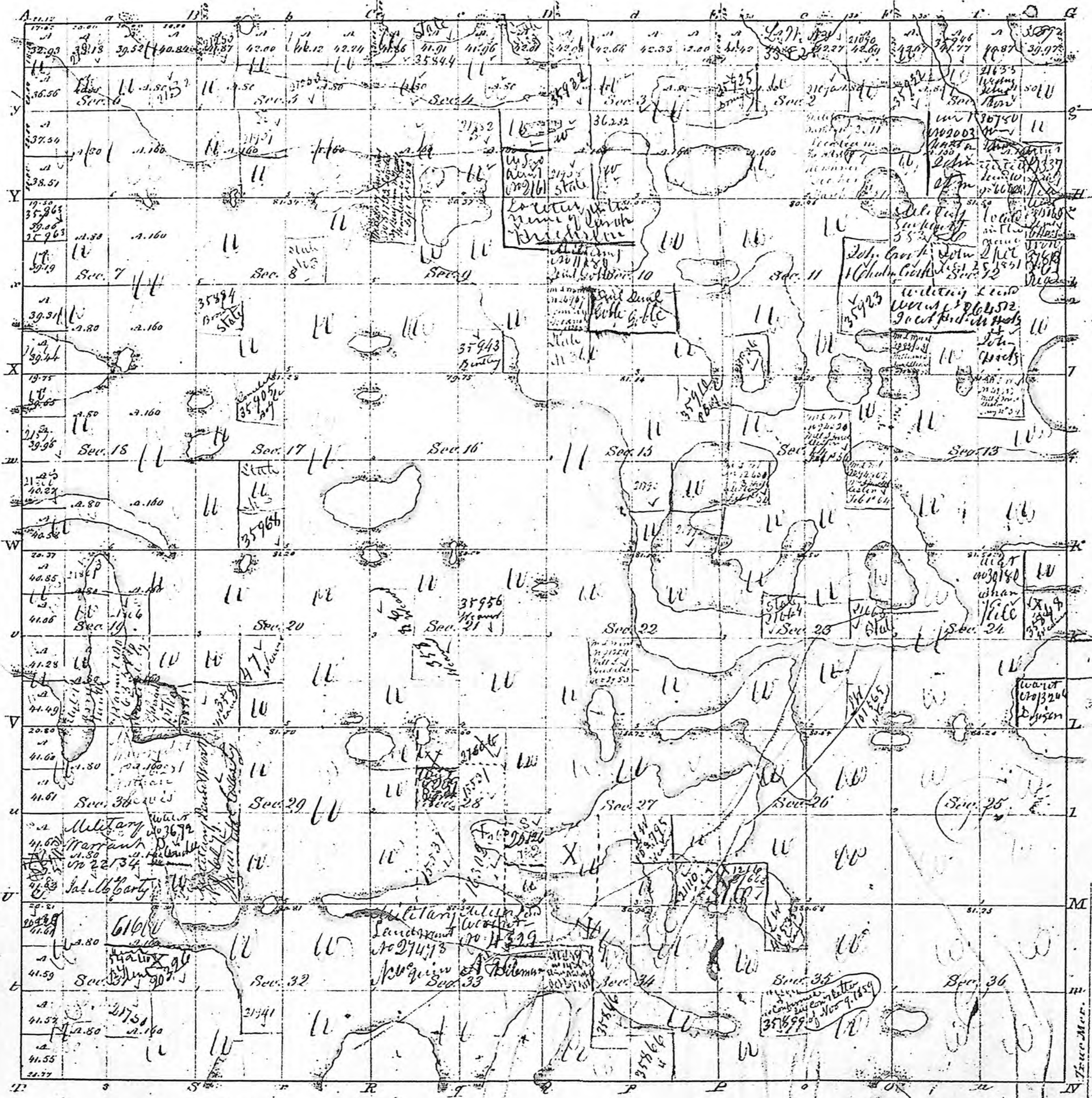
Surveyor General's Office,
Cincinnati, Mar. 30, 1835.

M. T. Williams
Sur. Gen.

Meanders of										
Posts	Courses	Ch ^s Lk ^s		Posts	Courses	Ch ^s Lk ^s		Posts	Courses	Ch ^s Lk ^s

IND

Township N^o XXXI N, Range N^o III W, 2nd Mer.



THE WEEKLY NEWS
 JOHN H. HOLLIDAY,
 PUBLISHER AND PROPRIETOR.
 WEDNESDAY, SEPTEMBER 20, 1871.

PUBLIC NOTICE.—NOTICE IS HEREBY
 given that applications will be received at
 this office on the second Friday (9th) of October
 next, for the purchase of the following described
 tract of land, erroneously marked as swamp land
 on the Plat Book of this office, and heretofore
 withheld from sale, to-wit: The northeast quarter
 of southwest quarter of section 2, town 31 north,
 range 3 west.
 G. M. BALLARD, Register.
 U. S. Land Office, Indianapolis, Sept. 9, 1871.

Offered at Public Sale this 4th day of Dec^r 1871

State Act 25 of September 1850 Sec 110

Surveyed by A. C. Van Ness in 1834

Scale 40 chs to an inch.

The above plat is truly copied from the
 original on file in this office.

Surveyor General's Office
 Cincinnati, April 21, 1871

[Signature]