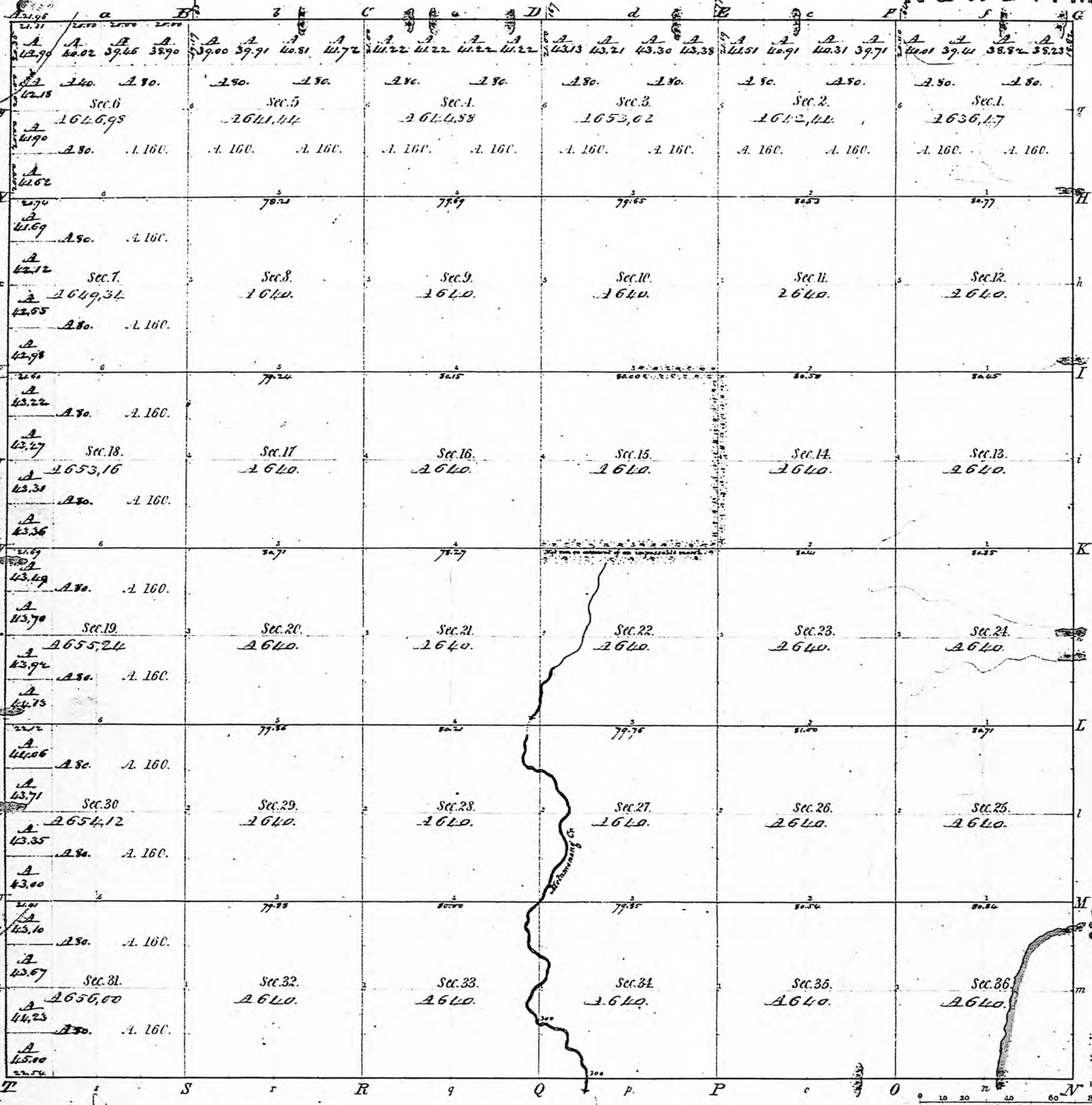


Rec'd May 17th 1836 Survey General
 Tolson dated May 11th 1836

Township N^o XXX N. Range N^o IV W 2^d Mer. **INDIANA, N & W 2 P. M.**



Meanders of

Posts	Courses	Ch. Lk.	Posts	Courses	Ch. Lk.	Posts	Courses	Ch. Lk.

Na 6

Total number of Acres. 25,133.09

Surveys Designated	By Whom Surveyed	Date of Contract	Amount of Surveys	When Surveyed	When p ^d for and ch ^d in the Sur. Gen. ¹⁵ acc ^t ?
Township lines	Clark & Wiley	29 June 1833	M. Ch. Lks. 24. 63. 67	4. 9. 1833	2. 9. 1834
subdivisions	Robert Hanna	4. 1834	59. 09. 94	2. 9. 1834	1. 9. 1835

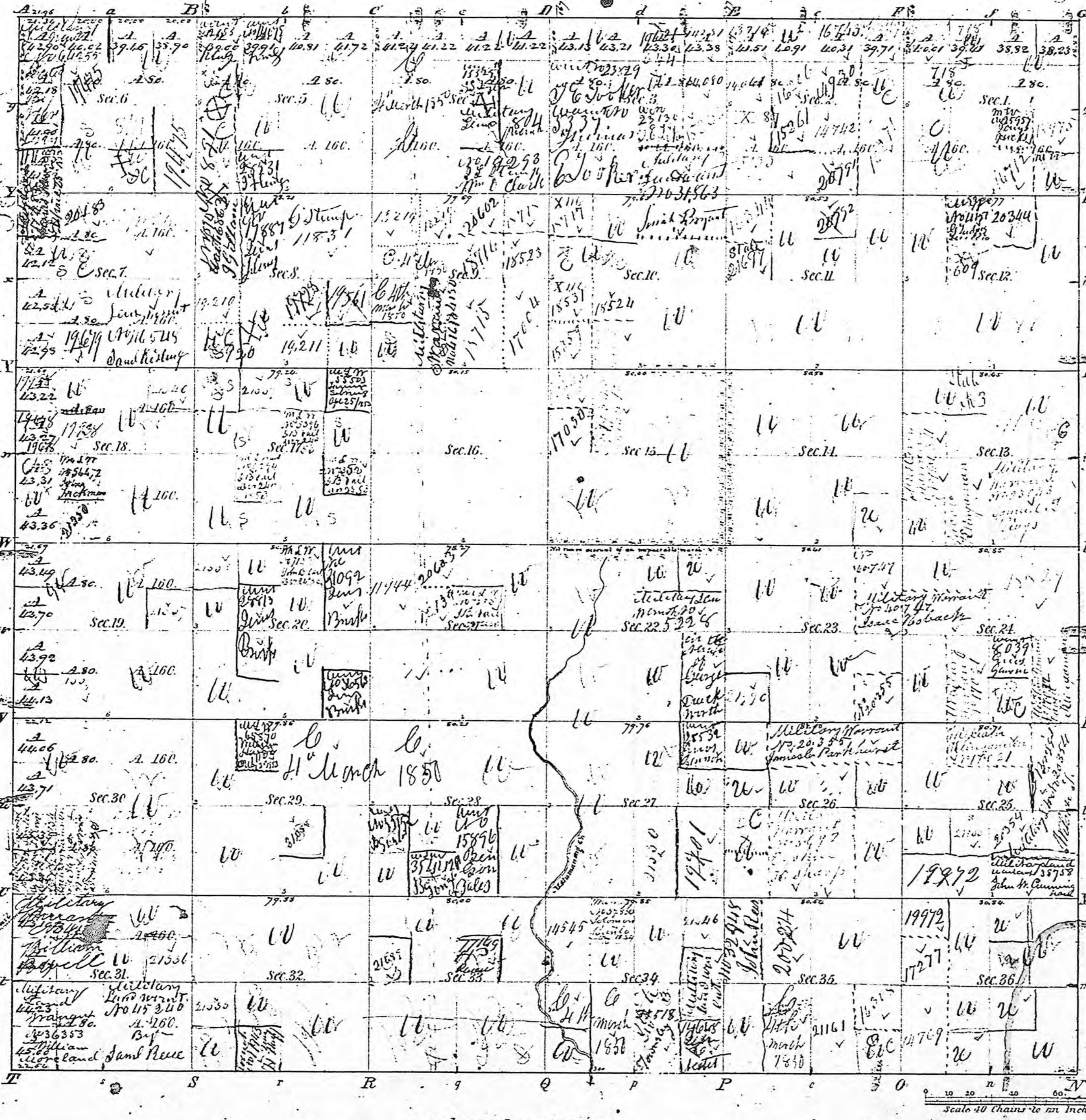
The above Map of Township N^o 30 North, of Range N^o 4 West of the 2^d Principal Meridian, Indiana, — is strictly conformable to the field notes of the survey thereof on file in this Office, which have been examined and approved.

Surveyor General's Office,
 Cincinnati, April 26th 1836.

Compared
 R. J. Lytle
 Sur. Gen.
 by Saml. Williams
 Ch. Clk.

IND

Township N^o 30 Range N^o 4 W 2^o Mer:



Offered at Public Sale the 5th day of December 1858

Meanders of

Posts	Courses	Ch.	Lk.	Posts	Courses	Ch.	Lk.	Posts	Courses	Ch.	Lk.

State Act 25th September 1850 Sec 11

Total number of Acres.

Surveys Designated	By Whom Surveyed	Date of Contract	Amount of Surveys	When Surveyed	When p ^d for and ch ^d in the Sur. Gen ^l acc ^t
Township lines	Clark & Hilkey			1853	
Subdivisions	Robert Hanna & Co.			1854	

The above Map of Township N^o 30 North, of Range N^o 4 West of the 2^o Principal Meridian, Indiana, is strictly conformable to the field notes of the survey thereof on file in this Office, which have been examined and approved.

Surveyor General's Office
 Cincinnati, April 26th 1858
R. B. Hildreth Sur. Gen^l