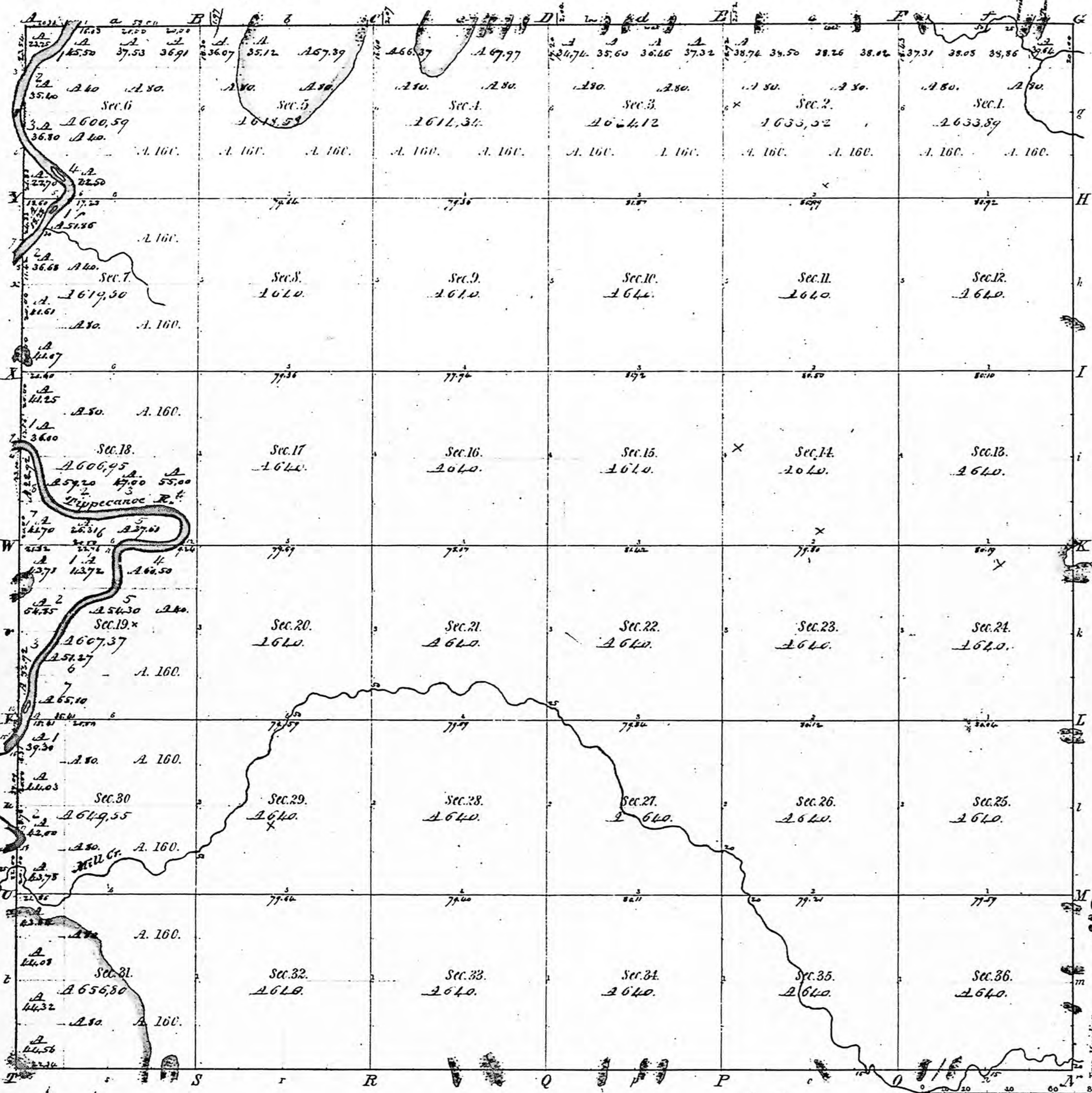


Township 30 XXX N. Range 10 W. 2^d Mer.



Meanders of Tippecanoe River.								
Posts	Courses	Ch. Lks.	Posts	Courses	Ch. Lks.	Posts	Courses	Ch. Lks.
1.	S 55° W	3.13	2.	S 49° 41'	2.24			
	S 26° W	11.45		S 34° 41'	11.53			
	S 36° W	11.18		S 53° 41'	12.00			
	S 19° W	5.83	3.	S 21° 41'	7.04			
	S 26° W	5.57	4.	S 43° 41'	17.26			
	S 30° W	8.22		S 41° 41'	5.50			
	S 38° 41'	5.12		S 35° 41'	5.71			
	S 14° 41'	3.82	5.	S 77° 10'	6.69			
	S 30° 41'	3.21		S 22° 41'	5.91			
	S 37° 41'	7.08		S 15° 41'	7.57			
	S 47° 10'	5.83	7.	S 27° 41'	13.31			
	S 50° 41'	6.57	11.	N 84° 41'	4.20			
	S 40° 41'	3.30		S 26° 41'	15.57			
	S 37° 41'	3.40		S 22° 41'	5.57			
6.	S 9° 41'	4.26		S 24° 41'	9.26			
	S 19° 41'	1.83		S 73° 41'	5.44			
	S 44° 41'	6.00		S 82° 41'	9.13			
	S 46° 41'	7.25		S 77° 41'	4.87			
	S 27° 41'	5.60		S 83° 41'	6.40			
	S 25° 41'	3.41		N 84° 41'	7.30			
	S 31° 41'	4.57		N 88° 41'	4.84			
	S 43° 41'	6.22		N 78° 41'	8.04			
	S 60° 41'	1.93		S 81° 41'	11.07			
	S 60° 41'	1.26		S 58° 41'	2.58			
7.	N 17° 41'	4.22		S 8° 41'	4.73			
	S 48° 41'	4.12		S 66° 41'	7.86			
	S 27° 41'	12.83		S 75° 41'	4.15			
	S 21° 41'	4.98		S 58° 41'	3.05			
	S 15° 41'	3.83		N 74° 41'	13.35			
	S 27° 41'	3.64		S 64° 41'	3.57			
	S 35° 41'	4.07		S 30° 41'	3.26			
	S 78° 41'	5.35	11.	S 30° 41'	3.00			
	S 85° 41'	8.18		S 1° 41'	17.04			
	N 72° 41'	10.58		S 72° 41'	11.66			
	N 85° 41'	12.74		S 64° 41'	10.38			
	N 80° 41'	5.46		S 25° 41'	14.86			
	N 86° 41'	4.53		S 41° 41'	15.26			
	S 79° 41'	5.24		S 9° 41'	16.34			
	S 73° 41'	6.61		S 17° 41'	6.07			
	S 27° 41'	7.00	14.	S 34° 41'	4.87			
	S 21° 41'	7.12	15.	S 28° 41'	4.76			
12.	S 72° 41'	5.61						
	S 65° 41'	11.00						
	N 89° 41'	4.00						
	N 75° 41'	4.98						
	N 73° 41'	5.00						
	S 37° 41'	2.88						
	S 10° 41'	13.13						
	S 22° 41'	7.59						
	S 60° 41'	18.00						
	S 39° 41'	10.00						
	S 23° 41'	7.21						
	S 45° 41'	8.40						
	S 44° 41'	10.20						
	S 51° 41'	18.59						
	S 41° 41'	3.50						
	S 24° 41'	11.04						
13.	S 38° 41'	2.46						
	S 17° 41'	1.16						
	S 28° 41'	6.10						
	S 33° 41'	6.00						
16.	S 80° 41'	1.63						
17.	S 40° 41'	3.80						
	S 10° 41'	5.00						
18.	S 46° 41'	3.17						

INDIANA. N. W. 2 P. M.

Total number of Acres: 22,865.21

Surveys Designated	By Whom Surveyed	Date of Contract	Amount of Surveys	When Surveyed	When ^d for and ch ^d in the Sur. Gen. ^l ac ^r
Township lines	Clark & Hubble	29 June 1833	M. Ch ^s Lks. 24 05 66	4 th 1833	2 ^d 9 th 1834
Subdivisions	Robert Hanna	4 Feb. 1834	69 13 54	2 ^d 9 th 1834	1 st 9 th 1835

The above Map of Township No. 30 North, of Range No. 10 West 2^d Principal Meridian, Indiana, is strictly conformable to the field notes of the survey thereof on file in this Office, which have been examined and approved.

Surveyor General's Office,
Cincinnati, April 24th 1835.

Robt. S. Lytle
Sur. Gen.
by Saml. Williams
Ch. Clk.

Robt. S. Lytle
IND

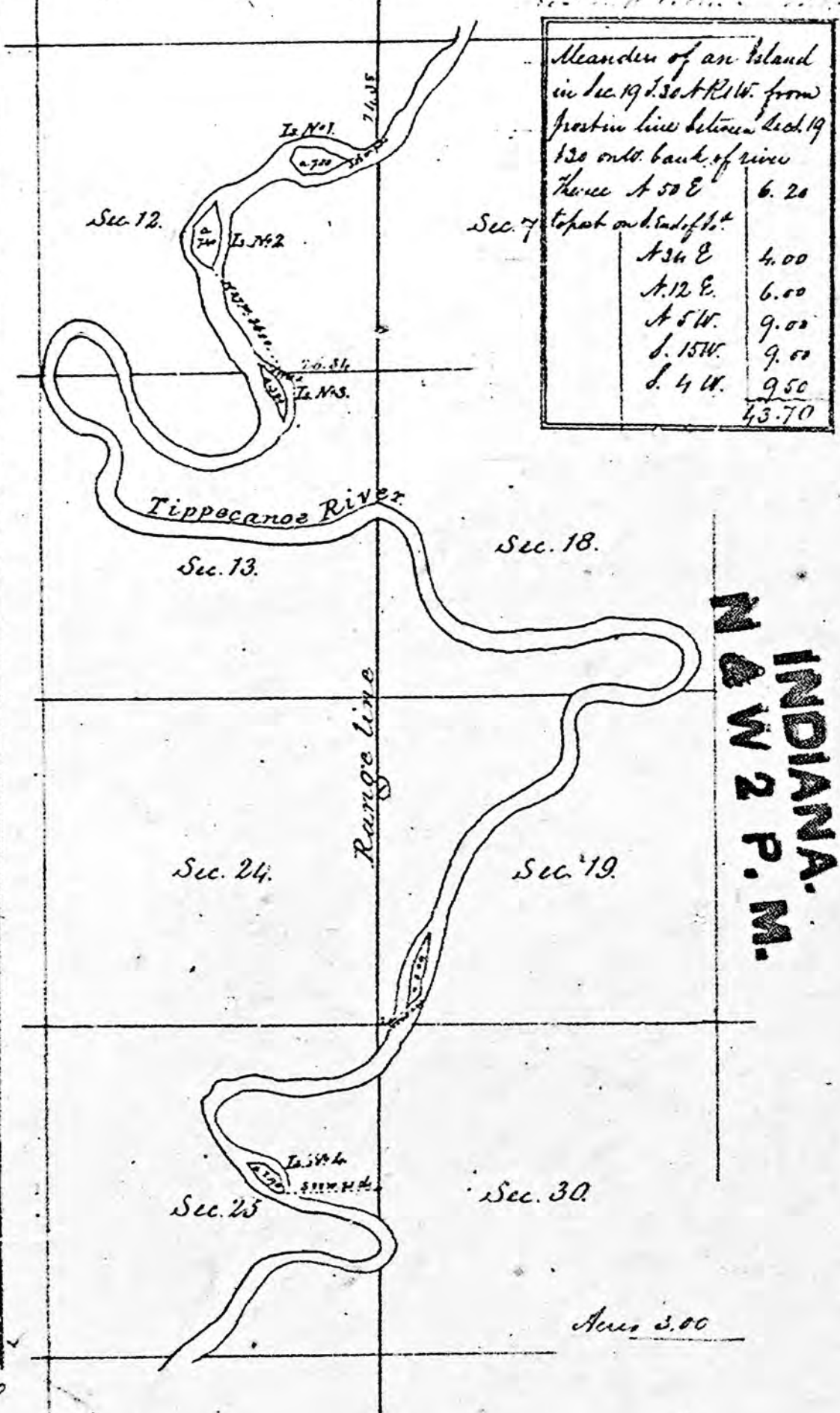
Township No 30 N. Range No 2 W. 2nd Mer Id Township 30 N. R. 1 W. 2nd Mer. 1.

Islands in Tippecanoe R.

Surveyed July 1848 by A. E. Van Ness Dep^y Sur^r

Meanders of Islands in T. 30 N., R. 2 W.	
Island No. 1 in sec. 12, from post in E. boundary of sec. 12 North side of river thence	
N 52 W	7.70
to post on E. end of I.	
S. 77 W.	12.00
S. 88 W.	1.00
S. 39 W.	1.00
S. 11 E.	5.00
S. 88 E.	5.00
N. 77 E.	6.00
N. 58 E.	5.50
Island No. 2 from post in line of sec. 12 & 13 East side of river thence at 27 W. in lake 26 00 to Island	
N. 21 W.	7.00
N. 6 W.	3.00
N. 34 E.	10.00
S. 2 E.	10.00
S. 6 W.	3.00
S. 22 W.	5.50
Island No. 3 in sec. 13 from post in line of sec. 12 & 13 East side of River thence	
N. 77 W.	5.00
to Island	
S. 24 E.	1.00
S. 39 E.	1.00
S. 60 E.	6.00
S. 16 E.	2.00
N. 2 E.	11.00
N. 24 W.	3.00
N. 53 W.	5.00
N. 67 W.	5.00
Island No. 4 in sec. 25 from post on E. boundary of sec. 25 thence	
S. 88 W.	25.00
to Island	
N. 60 W.	6.00
N. 44 W.	5.00
N. 82 E.	4.00
S. 58 E.	4.00
S. 15 E.	5.20
Meanders	105.20

Acres 31.60



Meander of an Island in sec. 19 S. & R. 1 W. from post in line between sec. 19 & 20 on N. bank of river thence	
N 50 E	6.20
to post on N. side of I.	
N 34 E	4.00
N 12 E.	6.00
N 5 W.	9.00
S. 15 W.	9.00
S. 4 W.	9.50
	43.70

The above Map of Islands in Tippecanoe River in Townships No 30 North of Range 1 & 2 West of the 2nd Mer. Indiana is strictly conformable to the field notes of the survey thereof on file in this office, which have been examined and approved

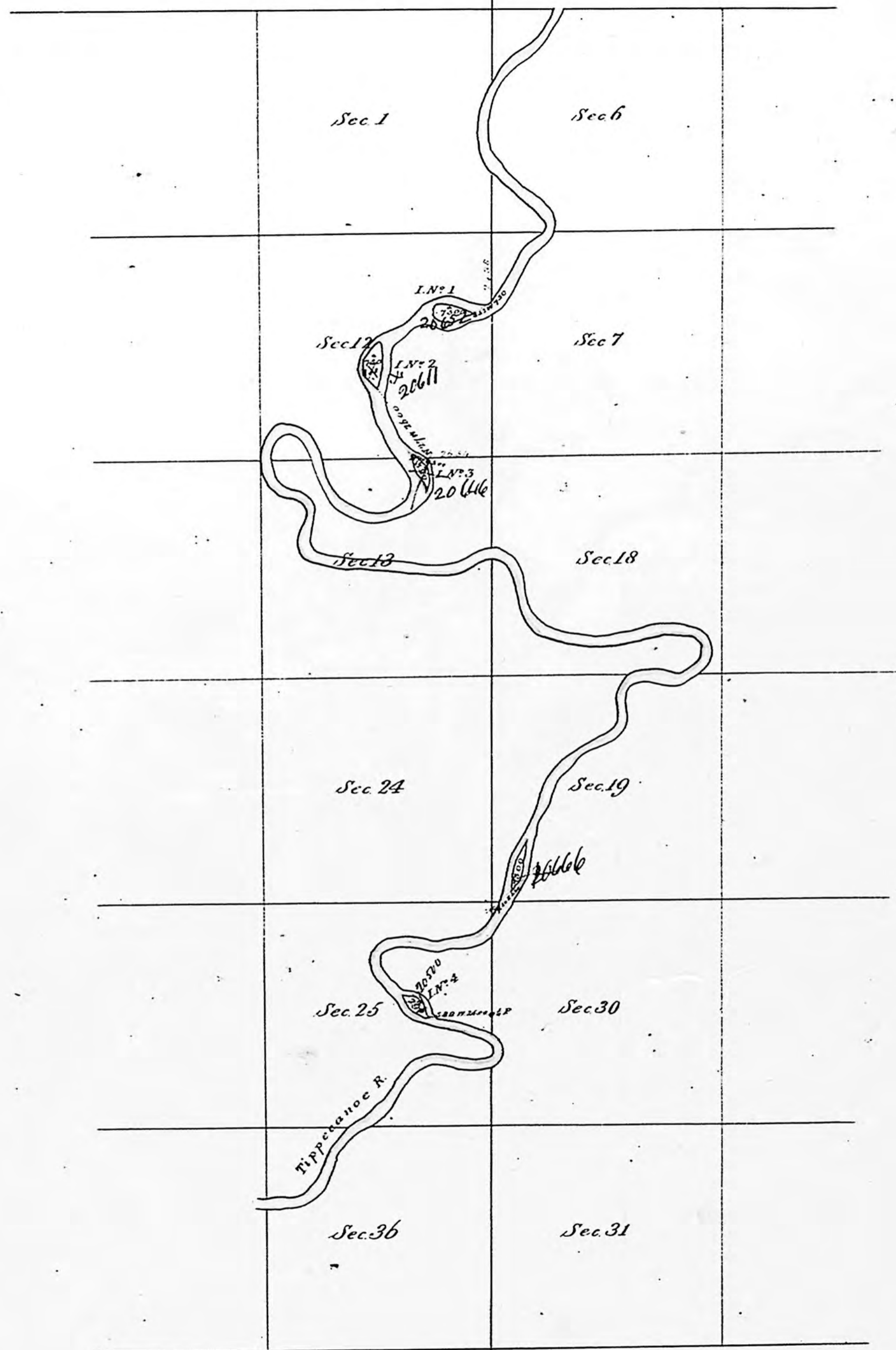
Surveyor General's Office,
Detroit, November 2, 1848.

Lucius Lyon, Sur. Genl.

Survey paid for per G. L. Office
Report No 716 of 11 Nov. 1848

IND

Islands in Tippecanoc River

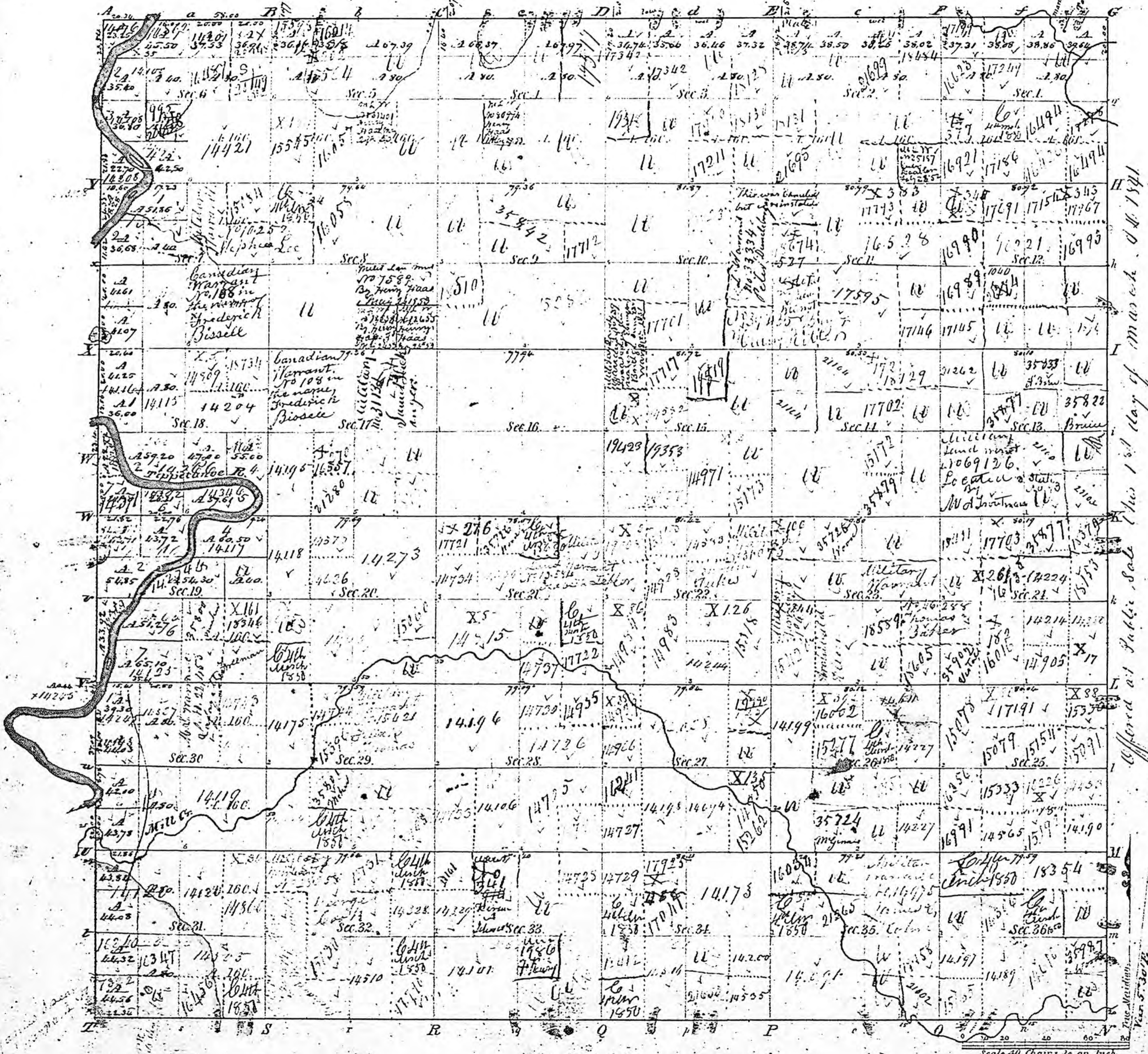


Surveyed by A. C. Van Ness D.C. July 1848.

I certify that the above is a true copy of the
 approved original plat in this Office
 Surveyor General's Office
 Detroit, Nov. 2, 1848.

Lucius

Township. 1° T14 N Range. 1° W 2° W. Mer.



Offered at Public Sale (The 1st day of March. 1841)

Meanders of							
Posts	Courses	Ch. Lk.	Posts	Courses	Ch. Lk.	Posts	Courses

State Act 28th September 1836, Sec. 111.

Total number of Acres: 22,860.21

Survey Designated	By Whom Surveyed	Date of Contract	Amount of Survey	When Surveyed	When paid for and ch ^d in the Survey?
Township lines	Clark & Sibley	29 June 1833	36 21 46	1 st of 1833	2 ^d of 1834
Subdivisions	Robert Hanna	4 Feb. 1831	69 03 54	2 ^d of 1834	1 st of 1835

The above Map of Township 1° 30 North, of Range 1° West 2° Principal Meridian, Indiana, is strictly conformable to the field notes of the survey thereof on file in this Office, which have been examined and approved.
 Surveyor General's Office,
 Cincinnati, April 24th 1836. *Robt. Lytle* Surveyor Genl.