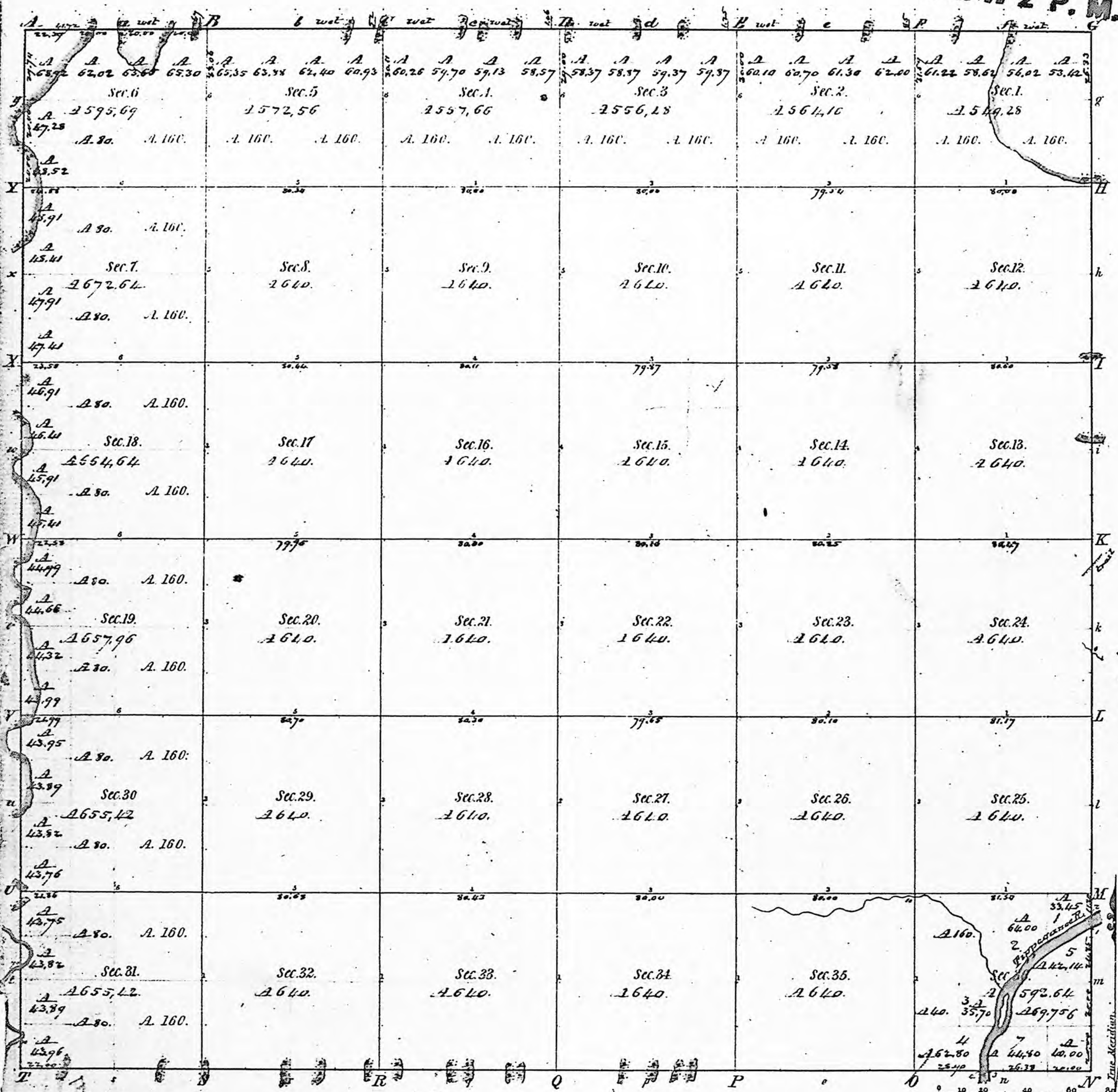


Township. V^o XXIX. N. Range. N^o III. W. 2^o. Mer.

INDIANA.
N & W 2 P. M.



Meanders of Tipton River

Posts	Courses	Ch. Lk.	Posts	Courses	Ch. Lk.	Posts	Courses	Ch. Lk.
Left Bank down								
1.	S 54° 44'	5.50						
	S 62° 14'	5.00						
	S 85° 44'	11.13						
	S 45° 44'	6.71						
	S 55° 14'	5.62						
	S 41° 14'	6.54						
	S 35° 44'	4.43						
	South	4.94						
	S 24° 44'	3.86						
	S 14° 44'	6.25						
	S 19° 44'	2.97						
	S 42° 44'	5.65						
3.	S 21° 44'	16.00						
Right Bank down								
5.	S 66° 44'	7.48						
	S 55° 44'	9.74						
	S 54° 44'	12.70						
	S 43° 44'	11.81						
	S 51° 44'	5.10						
	S 29° 44'	14.30						
	S 13° 44'	5.29						
	S 34° 44'	5.57						
	S 30° 44'	6.53						
	S 19° 44'	7.57						
4.	S 10° 44'	9.45						

Total number of Acres. 22,651.19

Surveys Designated	By Whom Surveyed	Date of Contract	Amount of Surveys	When Surveyed	When p ^d for and ch ^d in the Sur. Gen ^l acc ^t
Township lines	Clark & Hilley		M. Ch ^s Lks.	1833	
Subdivisions	Robert Hanna D ^r		65,411.65	1834	

The above Map of Township N^o 29 North, of Range N^o 3 West of the 2^o Principal Meridian, Indiana, is strictly conformable to the field notes of the survey thereof on file in this Office, which have been examined and approved.

Surveyor General's Office.
Cincinnati, April 26th 1856.

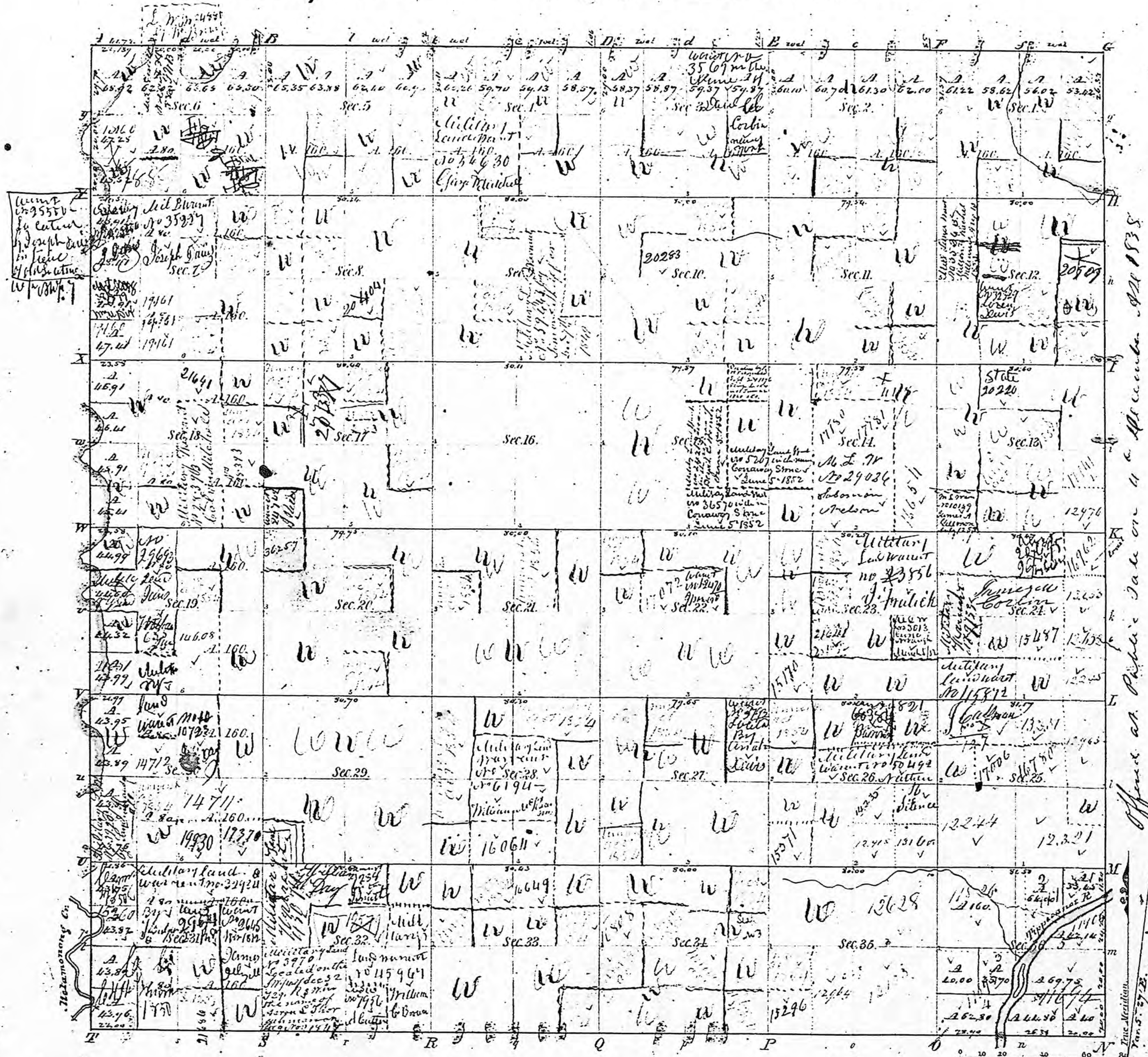
Compared
with
R. T. J. Lytle
by Sam. Williams

R. T. J. Lytle

IND

Township 24 North, Range 3 West of the 2nd Meridian.

Meanders of
 Posts, Courses, Ch. Lk. Posts, Courses, Ch. Lk. Posts, Courses, Ch. Lk.



State act 28 Sept. 1850
 Sec. 10

Offered at Public Sale on 4th of November 1855

Total number of Acres.

Surveys Designated	When Surveyed	Date of Contract	Amount of Surveys	When Surveyed*	When p ^d for and ch ^d by the Sur ^{vs} Gen ^l are?
Township lines	Clark & Sibley	29 June 1833	36 Ch ^s 75 Lks.	11 th Nov. 1833	2 nd Dec. 1834
Subdivisions	Robert Hannan	4 Feb. 1834	61 Ch ^s 64 Lks.	2 nd Dec. 1834	1 st Dec. 1835

The above Map of Township No. 24 North, of Range No. 3 West of the 2nd Principal Meridian, Indiana, is strictly conformable to the field notes of the survey thereof on file in this Office, which have been examined and approved.

Surveyor General's Office
 Cincinnati, April 26th 1836.
 H. H. Taylor, Sur. Gen.