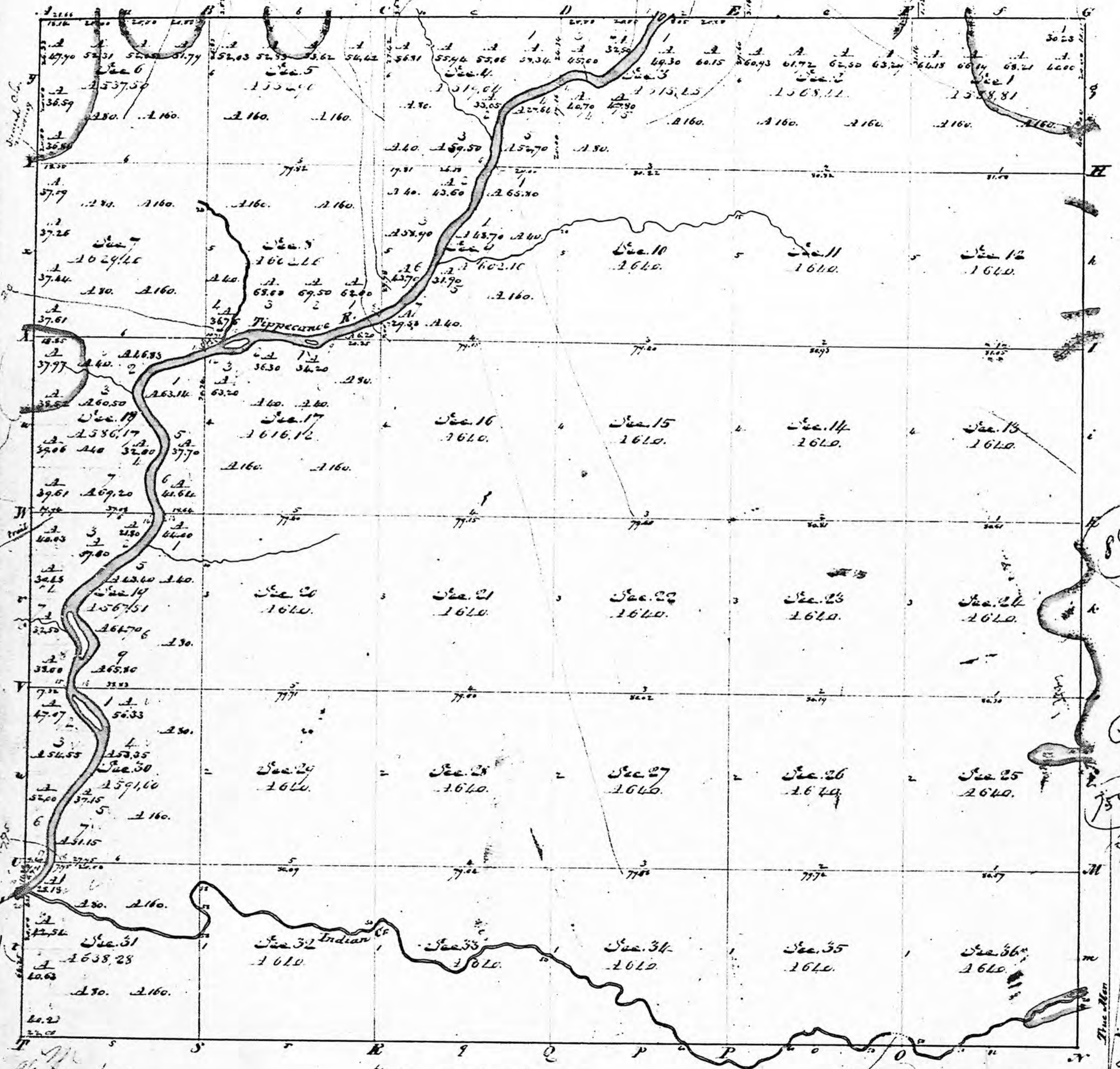


Indiana. N & W 2 P. M. Township. V. W. A. V. Range. V. W. W. 2<sup>nd</sup> Mer.



*Mandors of Tippecanoe River.*

Dist.	Course	Dist.	Course	Dist.	Course	Dist.	Course
1.	S 1/2 Bank down	52.47	6.11	S 14W	6.60		
2.	S 62 1/2 W	2.67	S 12 W	5.76	S 27 W	5.37	
	S 42 W	8.48	S 21 E	1.21	S 22 W	5.16	
	S 30 W	6.26	S 57 1/2 E	12.21	S 11 E	2.33	
	S 32 W	4.26	S 66 1/2 E	4.13	S 12 E	12.30	
	S 36 W	5.23	S 19 E	4.00	S 10 E	2.71	
	S 55 1/2 W	10.72	S 10 E	6.20	S 2 W	3.62	
	S 68 1/2 W	4.90	S 7 W	4.58	S 21 1/2 W	6.09	
	S 85 1/2 W	5.01	S 21 W	5.75	S 37 W	15.32	
	N 68 W	7.21	S 27 1/2 W	10.49	S 47 1/2 W	8.82	
	N 85 W	2.90	S 37 W	10.71	S 50 W	7.15	
	S 66 W	5.50	S 39 1/2 W	5.60	S 51 1/2 W	15.16	
	S 35 W	3.00	S 27 W	3.68	S 41 W	8.74	
	S 72 W	.77	S 77 1/2 W	11.04	S 20 E	4.23	
4.	S 57 1/2 W	3.89	S 84 W	7.50	S 32 E	7.64	
	S 61 1/2 W	3.69	S 15 W	2.98	S 47 E	3.30	
	S 65 1/2 W	8.06	S 7 1/2 E	3.44	S 15 1/2 W	4.35	
	S 67 W	7.71	S 12 W	2.10	S 17 W	3.53	
	S 55 1/2 W	5.14	S 17 1/2 W	4.18	S 20 W	6.22	
	S 10 W	4.11	S 34 W	3.91	S 14 E	4.66	
	S 4 W	10.98	S 53 W	4.65	S 20 E	3.53	
	S 22 1/2 W	6.45	S 62 W	7.31	S 36 E	11.97	
	S 17 1/2 W	1.76	Right Bank down		S 46 E	6.38	
5.	S 20 W	9.63	S 25 W	8.28	S 8 E	5.50	
	S 23 1/2 W	14.07	S 48 W	3.37	S 27 1/2 W	10.17	
	S 42 W	13.25	S 38 1/2 W	12.50	S 27 1/2 W	7.67	
	S 27 W	12.00	S 62 W	9.34	S 32 W	6.20	
	S 26 1/2 W	14.00	S 23 1/2 W	4.57	S 37 W	6.80	
	S 52 1/2 W	25.50	N 58 W	7.15	S 20 W	8.81	
	S 61 1/2 W	2.98	S 30 1/2 W	3.50	S 13 1/2 W	7.00	
	S 66 W	7.66	S 67 W	6.74	S 11 1/2 W	6.80	
	S 74 W	9.17	S 57 1/2 W	2.62	S 6 W	4.70	
	S 73 W	4.17	S 56 W	8.04	S 6 E	4.10	
	S 53 W	8.11	S 70 W	15.12	S 33 W	5.35	
	N 80 1/2 W	9.08	S 43 W	9.40	S 42 W	5.97	
	N 74 W	8.26	S 2 W	6.11	S 64 W	3.83	
	S 84 W	12.20	S 6 W	11.05			
	S 52 W	4.50	S 23 W	9.46			
	S 57 W	4.38	S 38 W	9.74			
	S 65 W	5.60	S 1 W	5.61			
	N 76 W	5.30	S 9 1/2 W	5.18			
	N 61 W	2.20	S 40 1/2 W	7.88			
	S 68 1/2 W	8.74	S 58 W	5.76			
12.	S 71 W	6.30	S 35 W	7.36			
	S 74 W	2.46	S 11 W	10.05			
	S 78 W	8.57	S 28 W	9.58			
	S 71 W	2.94	S 49 W	4.25			
	S 81 W	6.74	S 44 1/2 W	13.28			
	S 28 E	7.54	S 48 W	6.23			
	S 21 E	10.60	S 76 W	2.36			
	S 15 E	6.94	S 69 1/2 W	12.93			
	S 31 W	4.68	S 74 1/2 W	5.47			
	S 16 W	14.67	S 67 W	7.10			
	S 14 E	13.20	N 81 W	10.31			
	S 20 1/2 W	1.47	N 84 W	14.50			
13.	S 15 E	2.07	S 82 W	10.25			
	S 10 W	1.93	S 74 W	5.34			
	S 9 1/2 W	3.17	S 57 1/2 W	2.83			
	S 21 W	8.46	S 70 W	6.97			
	S 53 1/2 W	3.97	S 53 W	3.15			
	S 52 W	15.75	S 65 1/2 W	1.87			
	S 51 W	7.46	S 81 W	5.44			
	S 32 W	2.69	S 71 W	8.30			
	S 36 1/2 E	3.41	S 72 W	14.50			
	S 48 1/2 E	10.61	S 47 1/2 W	6.58			
	S 6 E	8.26	S 25 W	9.17			
	S 32 W	9.54	S 38 E	12.30			
			S 16 1/2 E	10.99			

Survey Designated	By whom surveyed	Date of Contract	Acres of Survey	When surveyed	When for sale
Township Lines	Clark & Libbey	29 June 1833	23.65.11	1. yr. 1833	2. yr. 1834
Subdivision	Robert Hanna	4 Feb. 1830	74.25.57	2. yr. 1834	1. yr. 1835

The above Map of Township N. 29 North of Range N. 2 West 2<sup>nd</sup> Meridian, Indiana, is strictly conformable to the field notes of the survey thereon, on file in this Office, which have been examined and approved.

Surveyor General's Office.  
Cincinnati, April 26, 1836.

Robt. T. Lytle Sur. Gen.  
by Saml. Williams, Cl. Clk.

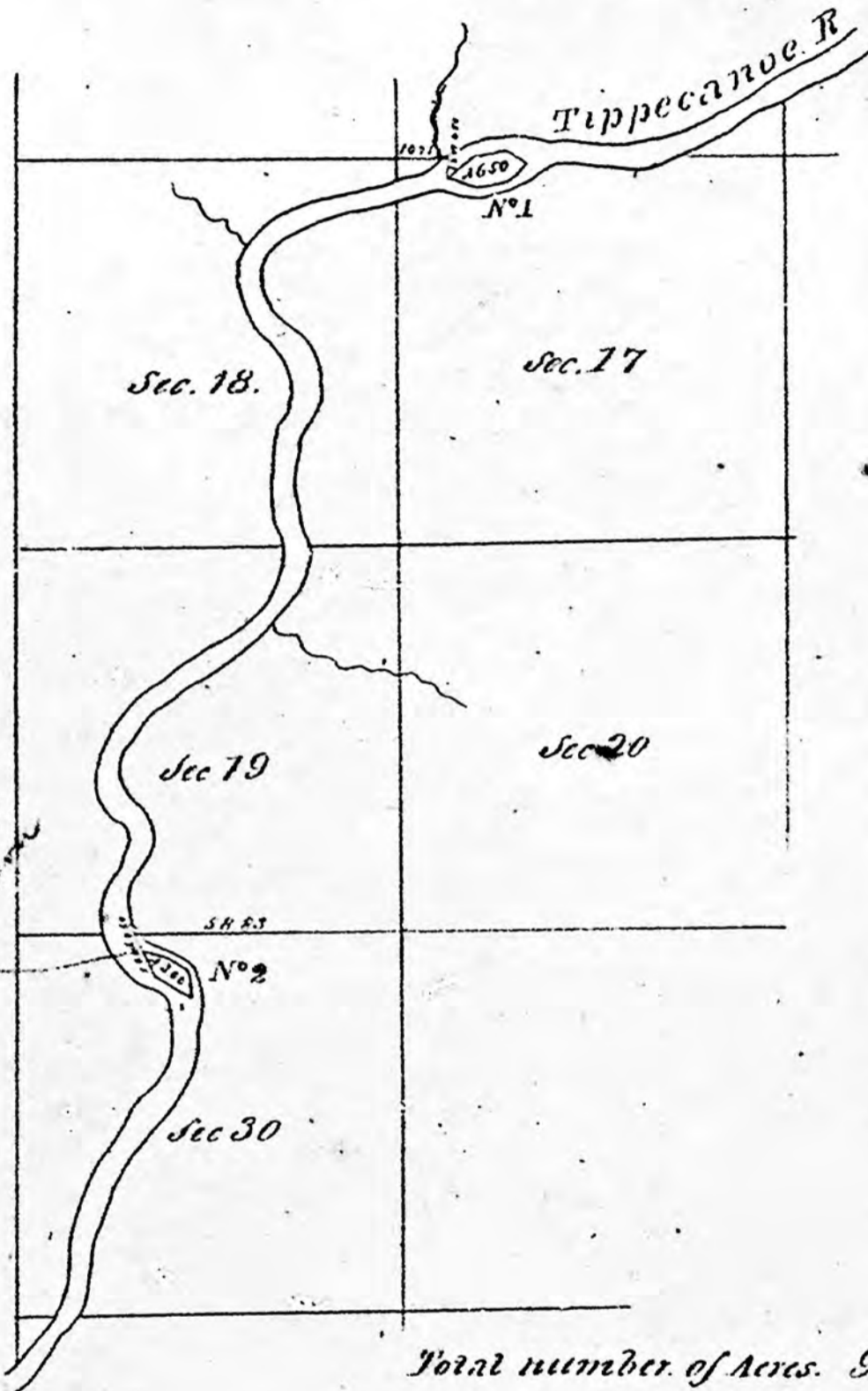
IND

**INDIANA**  
**N & W 2 P. M.**

Township N° 29 N. Range N° 2 W. 2<sup>nd</sup> Mer 1<sup>st</sup> 1/2.

*Islands in Tippecanoe River.*

Surveyed July. 1848. A. H. Van Ness. D.S.



*Meanders of Island N° 1*  
in Sec 17 from post in  
line between Sec 8 & 17 on  
N.W. bank of River.

S 32 W	4.50
to post on Island -	
S 66 E	5.00
S 86 E	4.00
N 61 E	5.00
N 32 E	4.00
N 81 W	6.00
S 70 W	5.00
S 55 W	5.10

*Meanders of Isl N° 2*  
in Sec 30 from post in  
line between Sec 19 & 30  
East bank of River.

S 34 E	2.50
to post on Island	
S 71 E	6.00
S 60 E	4.00
S 15 E	4.00
N 72 W	6.00
N 86 W	7.50

*Meanders - 68.60*

Total number of Acres. 9.50

The above map of Islands in Tippecanoe River in Township N° 29 N. Range N° 2 W. 2<sup>nd</sup> Mer. Indiana is strictly conformable to the field notes of the survey on file in this office, which have been examined and approved.

Surveyor General's Office  
Detroit, November 2, 1848

Lucius Lyon,

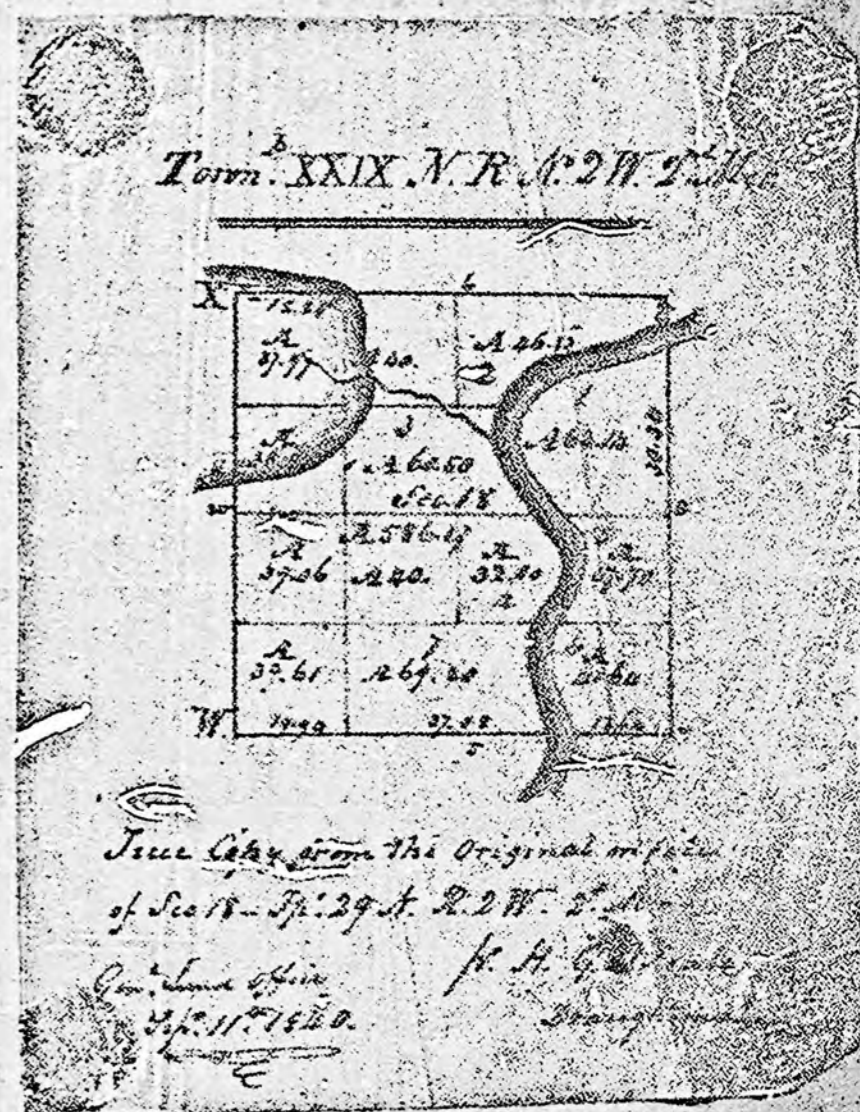
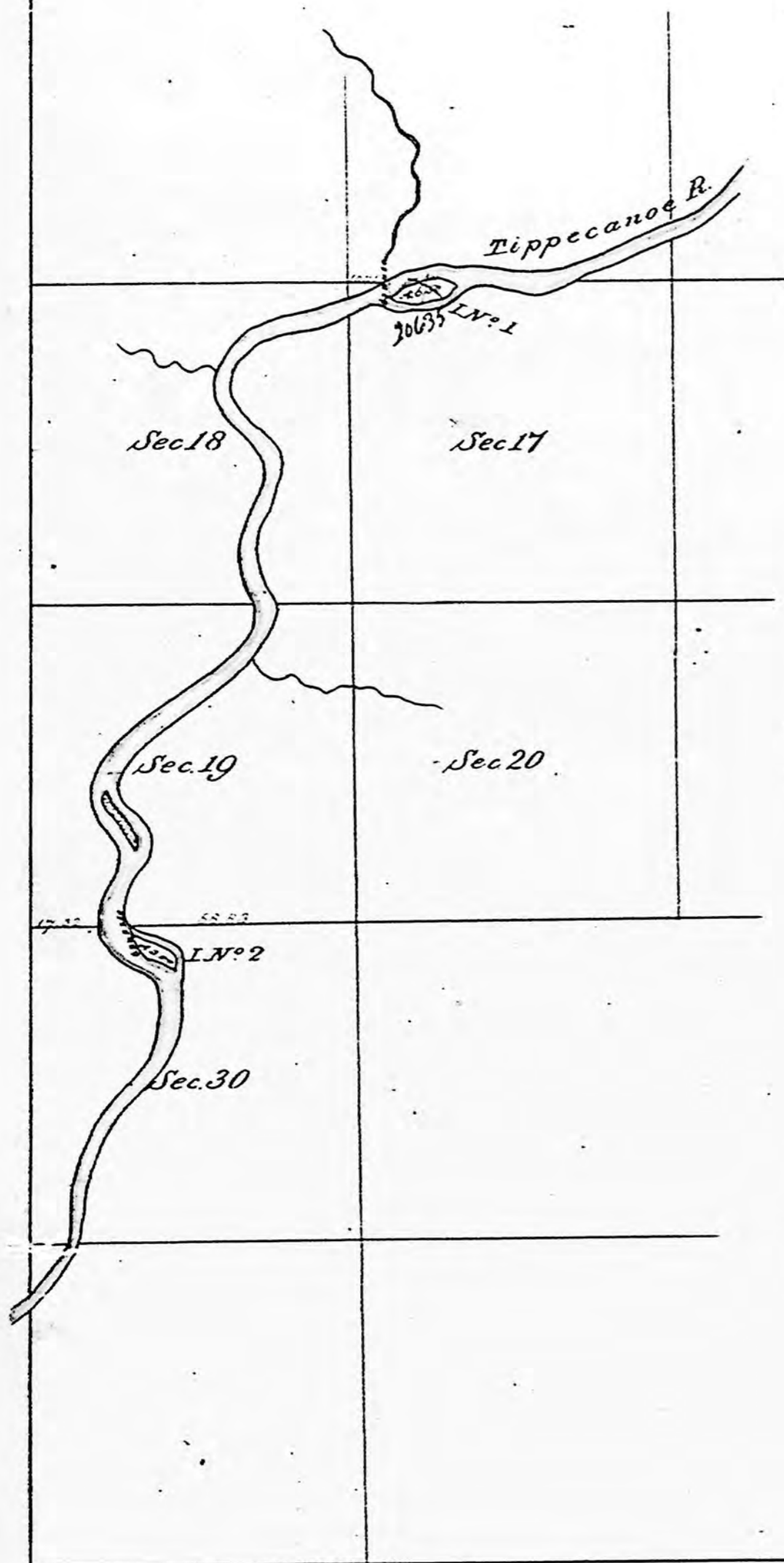
Sec Paul

Survey paid for per G. L. Office  
Report No 716 of 11 Nov. 1848

IND

Township N° 29 N. Range N° 2 W. 2nd Mer Ind<sup>a</sup>

Islands in Tippecanoe River

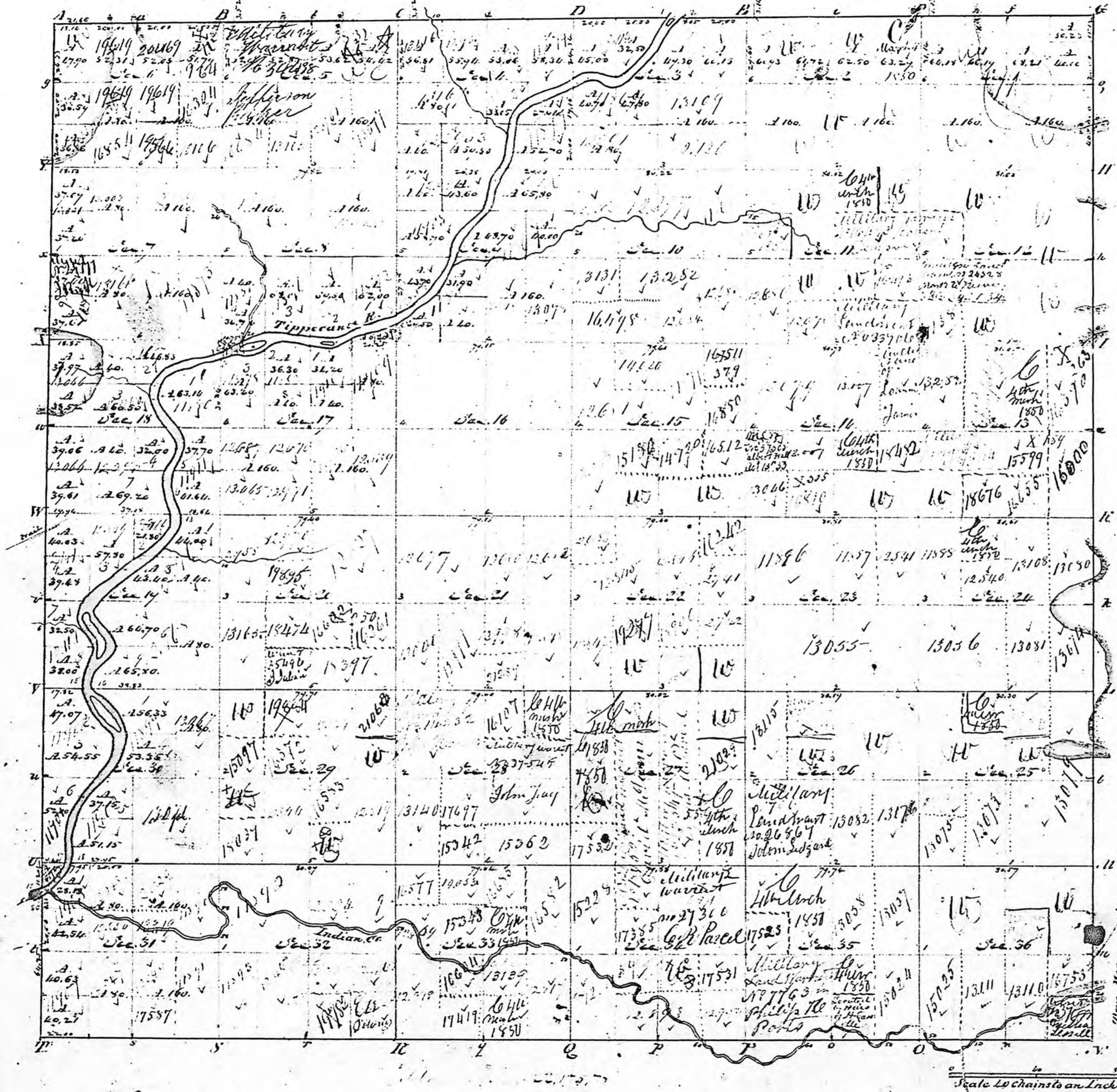


Surveyed by A. E. Van Neps D. 8. 1848

I certify that the above is a true copy of the  
approved original plat in this office  
Surveyor General's Office  
Detroit, Nov. 2. 1848.

Lincius [Signature]

**Township N. 111 N. Range N. W. 2<sup>d</sup> Mer.**



offered at Public Sale on December 4<sup>th</sup> 1838.

State Oct 28<sup>th</sup> September 1856. Dec 17.

Surveyed by Robert Hanna L.S. 1834.

The above plat is a true Copy of the original on file in this office.

Surveyor Gen's office  
Cincinnati April 26<sup>th</sup> 1836

C. S. Taylor

Scale 20 Chains to an Inch.